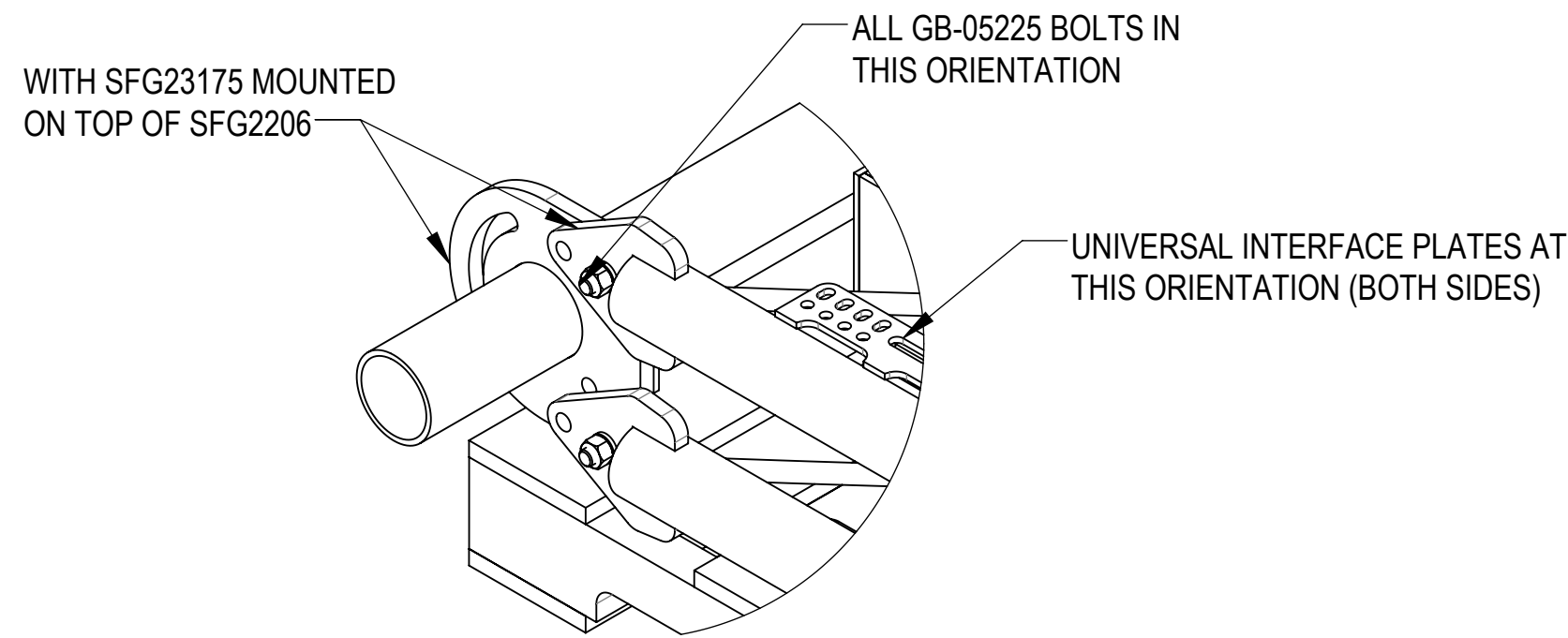
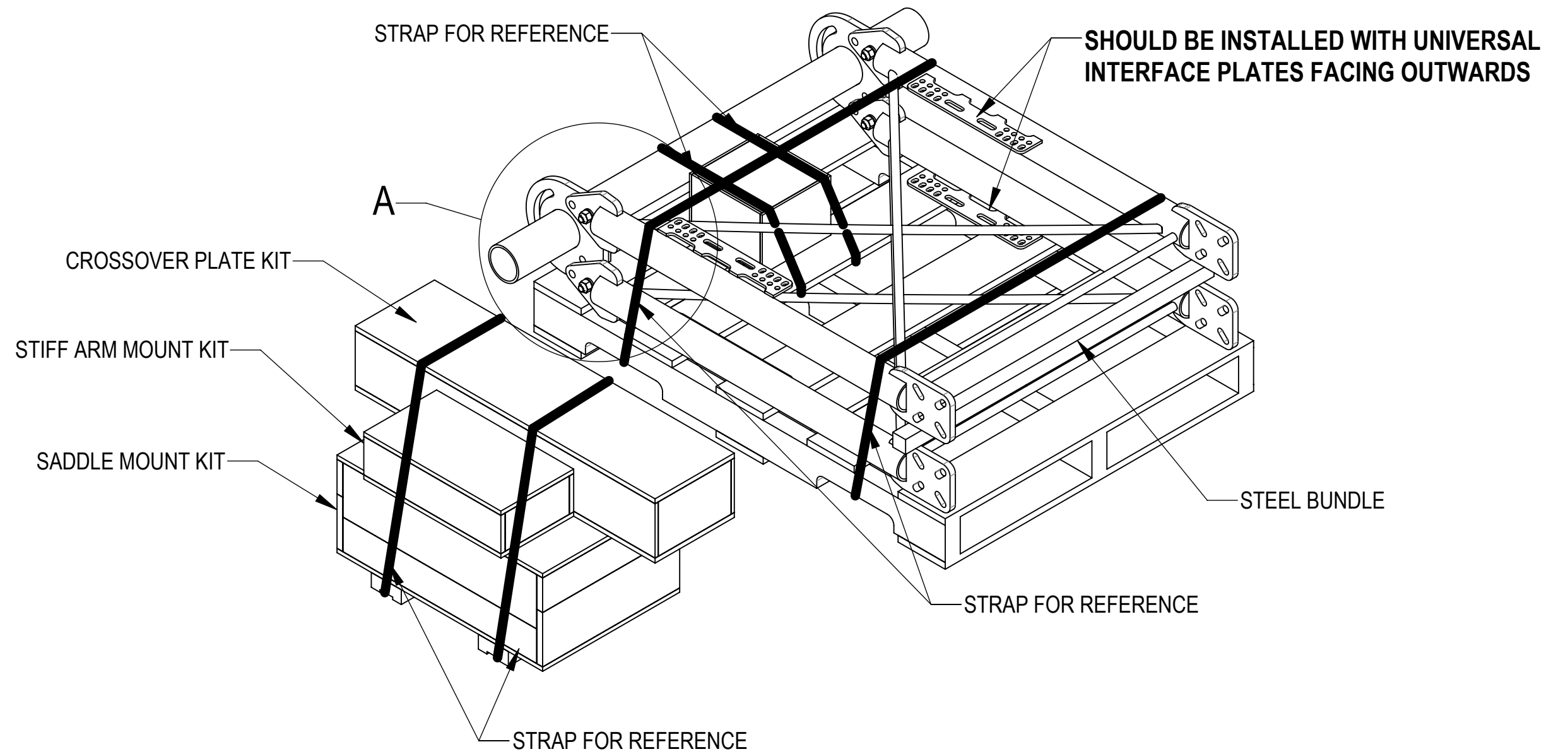
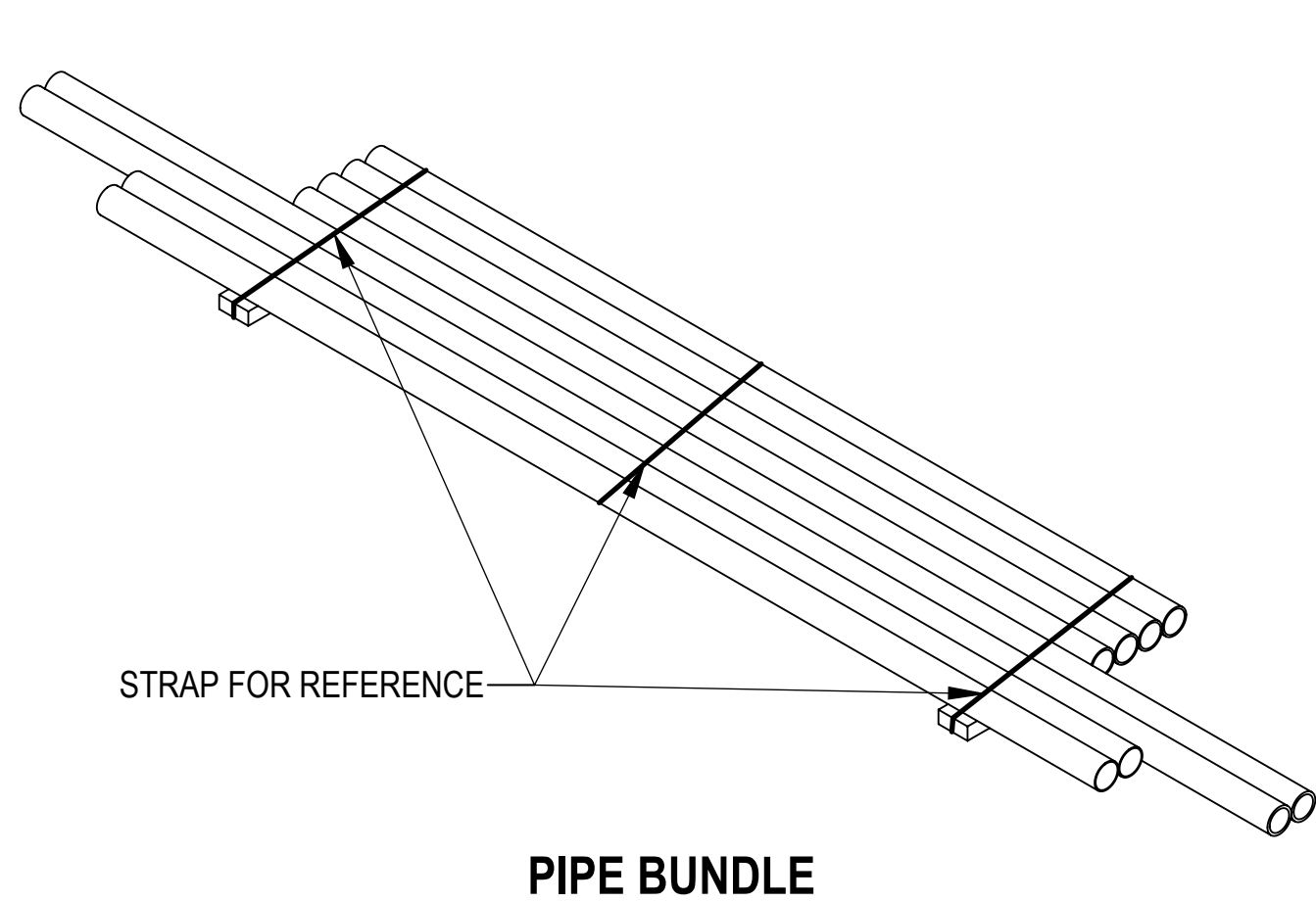


- 1.0 GENERAL NOTES
 - 1.1 ALL METRIC DIMENSIONS ARE IN BRACKETS [X.XX]
 - 1.2 FOR PATENT INFO: <https://www.adwpat.com>
- 2.0 DESIGN NOTES
 - 2.1 ANY HAZARDS OR OBSTRUCTIONS TO THE CLIMBING FACILITY AND SAFETY CLIMB MUST BE IDENTIFIED PRIOR TO INSTALLING THE APPURTENANCE. ADDITIONAL PRODUCTS MAY BE REQUIRED TO MAINTAIN THE INTEGRITY OF THE SAFETY CLIMB. DURING INSTALLATION, TEMPORARY AND/OR PERMANENT PRECAUTIONARY MEASURES SHOULD BE TAKEN TO PRESERVE THE CLIMBING FACILITY AND/OR SAFETY CLIMB.
 - 2.2 UP TO 5.0° TAPER AVAILABLE ON MODELS THAT SUPPORT ADJUSTMENT
- 3.0 MANUFACTURING/SPECIAL REQUIREMENTS
 - 3.1 TIGHTEN ALL BOLTS SECURING FLAT PLATES BY THE TURN-OF-NUT METHOD. TIGHTEN ALL U-BOLTS USING TURN-OF-NUT METHOD WITH ATTENTION TO LEAVE EQUAL DISTANCE AND EQUAL FORCE ON EACH LEG OF THE U-BOLT.
- 4.0 TEST
- 5.0 PACKAGING
 - 5.1 PACKAGING SHALL MEET ANDREW REQUIREMENTS PER DOCUMENT IS-PL-3005.
 - 5.2 PRINTED DOCUMENT TO BE PLACED INSIDE POLYBAG AND THEN IN SHIPPING CONTAINER.
 - 5.3 EXTRA HARDWARE MAY BE SUPPLIED, BAGGED AND SHIPPED.

REVISIONS			
REV.	DESCRIPTION	DATE	APPROVED
D	UPDATED NOTES; ADDED SPINE LENGTH; REPLACED SM-U2080HDG22 WITH SM-U2080HDG23; REMOVED LABEL SFG2350	YX1027 28DEC22	BA1025 40162116CMO
E	SHEET2: ADDED EPA DATAS; ADDED LABEL SFG2350; ADDED SFG2397-00; ITEM 6: SFG2386 QTY 1 WAS 2 EA; ITEM 10: GUB-4355 QTY 3 WAS 4 EA	JL1183 26SEP23	YW1045 40179940CMO
F	SHEET1: UPDATED PACKAGE VIEW; SHEET2: ADDED SFG2350 TO TABLE 1; SHEET5: ADDED LABEL INSTALLATION NOTICE	JL1183 17NOV23	YW1045 40183325CMO
G	UPDATED VIEWS FOR SFG23175 (ITEM 1) CHANGES. SHEET2: ADDED SFG23HDX-10-BNH & SFG23HDX-14-BNH. SHEET6: ADDED V-ARM DETAIL VIEW	JL1183 04JUL24	XK1001 40199603CMO
H	UPDATED EPA TABLE	YMENG 12DEC24	CB1094 40210882CMO
J	SHEET 4&8: ADDED AZIMUTH ADJUSTMENT RANGE VIEW & NOTE	JL1183 10JAN25	BA1025 40212102CMO



DETAIL A
SCALE 1 : 6

DENSITY	lbs/in ³
MASS	lbs
VOLUME	in ³
SURFACE AREA	in ²
HEIGHT	
LENGTH	
WIDTH	

Confidential

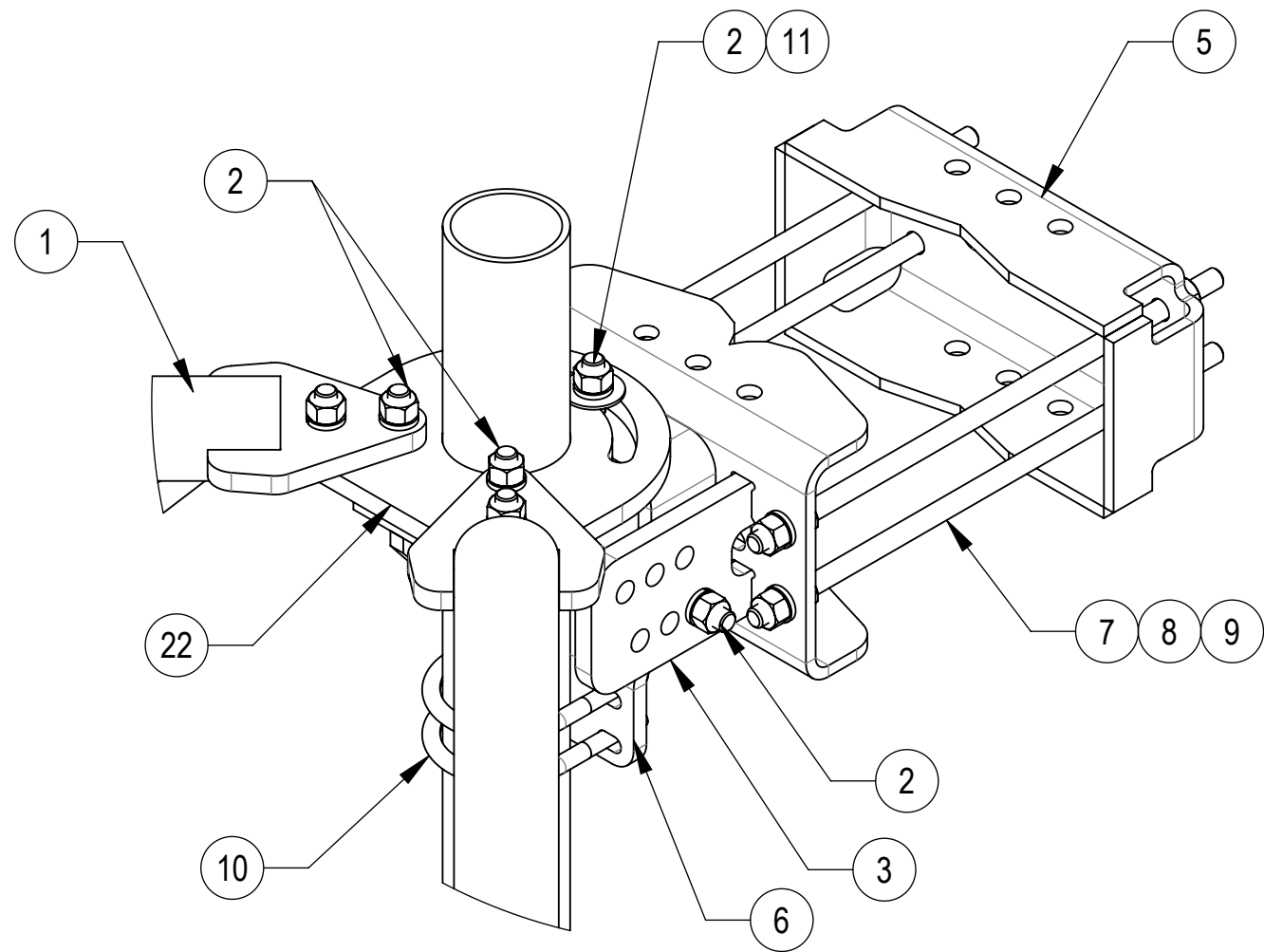
TOLERANCES		SAP MATERIAL MASTER							
0 PLACE X[X] ± 0.2[6.3]	2 PLACE .XX[X] ± 0.06[1.5]	SEE TABLE 1							
1 PLACE .X[X] ± 0.12[3.0]	ANGLES ± 2°								
FINISH		MATERIAL							
UNLESS OTHERWISE SPECIFIED DIMENSIONS ARE IN INCHES INTERPRET PER ANSI Y 14.5M-1994		NAME	DATE	TITLE					
		CE JL1183	05/16/2022	SECTOR FRAME, SFG23HDX SERIES					
		RW RY1002	06/11/2025						
		AD YMENG	06/11/2025						
		RE YMENG	06/11/2025						
ECN 40212102CMO									
SCALE	DOCUMENT NO.	SFG23HDX SERIES							
1:18									
SIZE	Auth Group	INSL	MODEL	DRAWING		SHEET			
C			VERSION	STATUS	REVISION	VERSION	STATUS	REVISION	1 OF 12
			01	RE	B	06	RE	J	

4

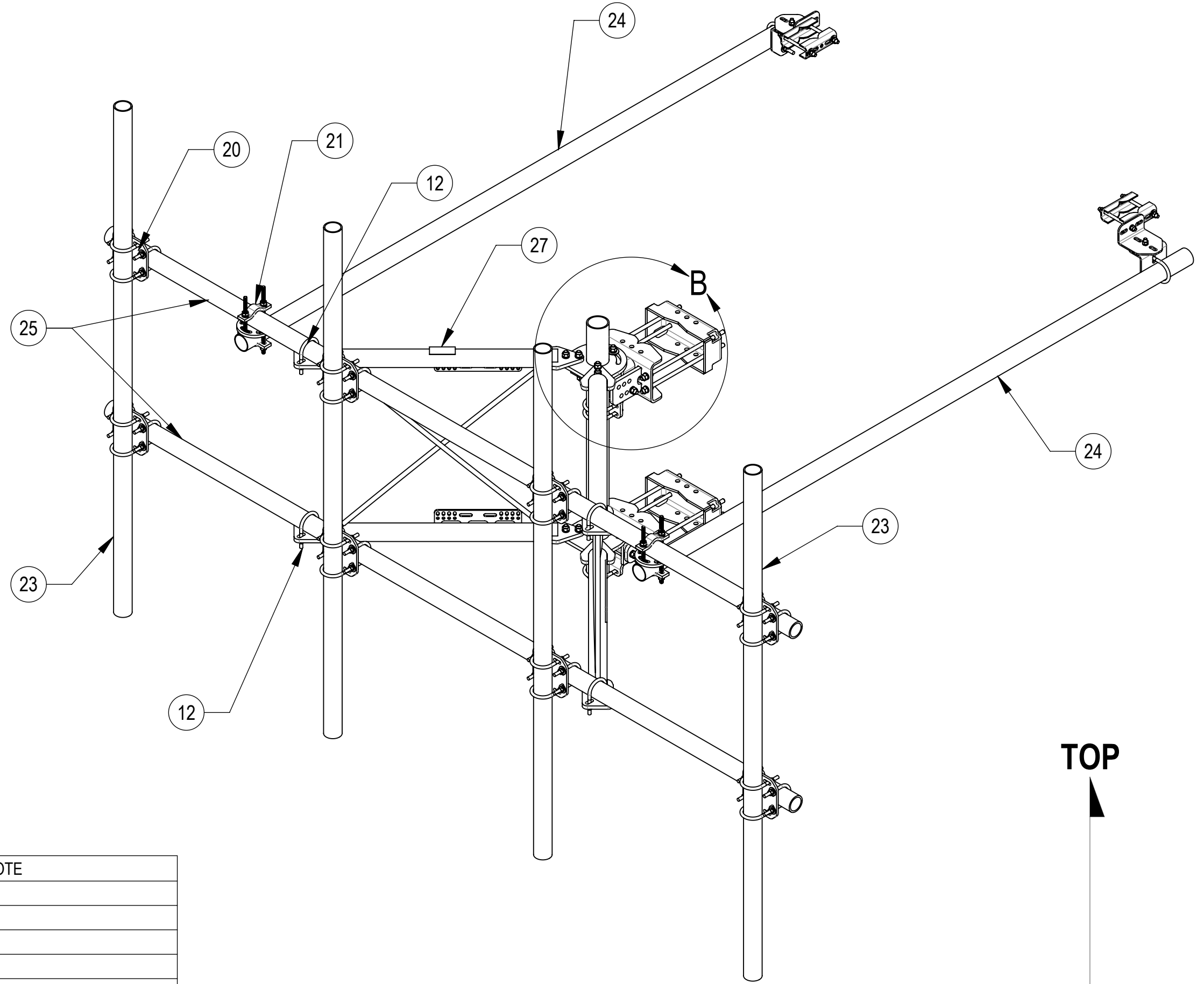
3

2

1



DETAIL B
SCALE 1 : 5

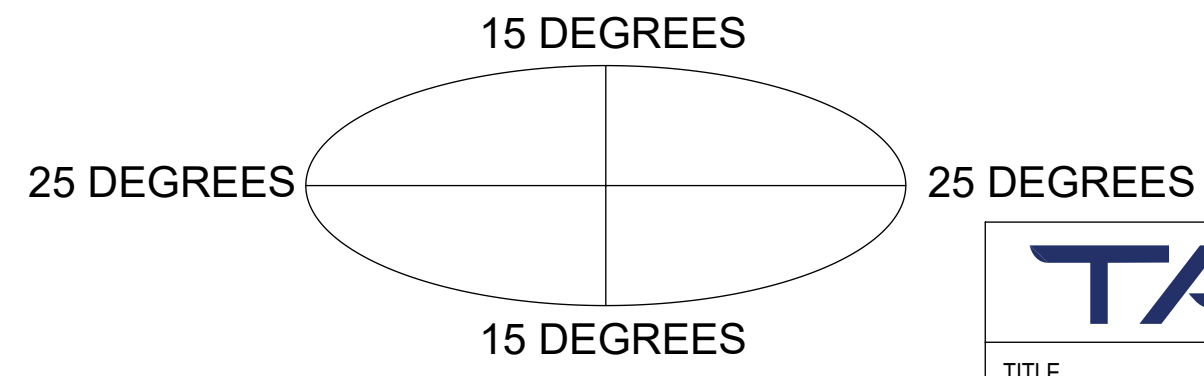


SFG23HDX-12-4-96 SHOWN FOR REFERENCE
(NOT ALL CONFIGURATIONS INCLUDE ALL ITEMS SEE NOTES IN TABLE)

COMPONENT PART NUMBERS PROVIDED FOR ASSEMBLY PURPOSES;
INDIVIDUAL COMPONENTS MAY BE SHIPPED AS PARTS WITHIN AN INCLUDED KIT.

ITEM	PART NO.	DESCRIPTION	QTY.	WEIGHT	NOTE
1	SFG23175	ARM STANDOFF SFG23	2	66.61 LBS	
2	GB-05225	5/8" X 2-1/4" GALV BOLT KIT	14	0.28 LBS	
3	SFG2380	WELDMENT, HD, TOP TAPER BRACKET	1	22.78 LBS	
4	SFG2381	WELDMENT, HD, LOWER TOWER LEG BRACKET	1	17.42 LBS	
5	SFG2289	G2 RRU BACK CLAMP, HD	2	18.65 LBS	
6	SFG2386	WELDMENT, SFG2 AZIMUTH BRACKET	1	10.07 LBS	
7	MT-382-18	5/8" X 18" THREADED ROD	8	1.43 LBS	
8	GWL-05	5/8" GALV LOCK WASHER	16	0.03 LBS	
9	GN-05	5/8" GALV HEX NUT	24	0.08 LBS	
10	GUB-4355	1/2" X 3-5/8" X 5" GALV U-BOLT	3	0.71 LBS	
11	GWF-05	5/8" GALV FLAT WASHER, 1.70D	2	0.06 LBS	
12	GUB-4352	1/2" X 3" X 5-1/4" GALV U-BOLT	6	0.71 LBS	
13	SAB01	FORMED CLAMP	4	1.35 LBS	
14	MT-379-8	1/2" X 8" GALV THREADED ROD	4	0.45 LBS	
15	XAU01	ANGLE, CROSSOVER, 1.9-3.5" X 1.9-3.5" OD	4	2.98 LBS	
16	GB-04145	1/2" X 1-1/2" GALV BOLT KIT	2	0.13 LBS	
17	GWF-04	1/2" GALV FLAT WASHER	8	0.04 LBS	
18	GWL-04	1/2" GALV LOCK WASHER	10	0.01 LBS	
19	GN-04	1/2" GALV HEX NUT	10	0.04 LBS	
20	XP-2525	CROSSOVER PLATE KIT, 2-7/8 OD X 2-7/8 OD	8	8.37 LBS	QTY SEE INDIVIDUAL DRAWING
21	XP-R	CROSSOVER PLATE, ROUND, UP TO 3.5" OD	2	6.20 LBS	
22	SFG2206	WELDMENT, ARM MOUNT	1	51.60 LBS	
23	MT54696	PIPE, 2.875"OD X 96"	4	45.96 LBS	PART NO. AND QTY SEE INDIVIDUAL DRAWING
24	MT546120120	PIPE, 2.875"OD X 120"	2	35.44 LBS	PART NO. SEE INDIVIDUAL DRAWING
25	MT546150276	PIPE, 2.875"OD X 150"	2	96.11 LBS	PART NO. SEE INDIVIDUAL DRAWING
26	SFG2397-00	WELDMENT, G23 AZIMUTH BRACKET	1	7.94 LBS	
27	SFG2350	LABEL, SFG23HDX	1	0.03 LBS	

ALLOWABLE TIEBACK ANGLE
± 15 DEGREES VERTICAL
± 25 DEGREES HORIZONTAL



TOP
BOTTOM

TALLEY®

TITLE
SECTOR FRAME, SFG23HDX SERIES

SIZE C	SCALE 1:16	DOCUMENT NO. SFG23HDX SERIES
DRAWING		SHEET
VERSION 06	STATUS RE	REVISION J
3 OF 12		

Confidential

4

3

2

1

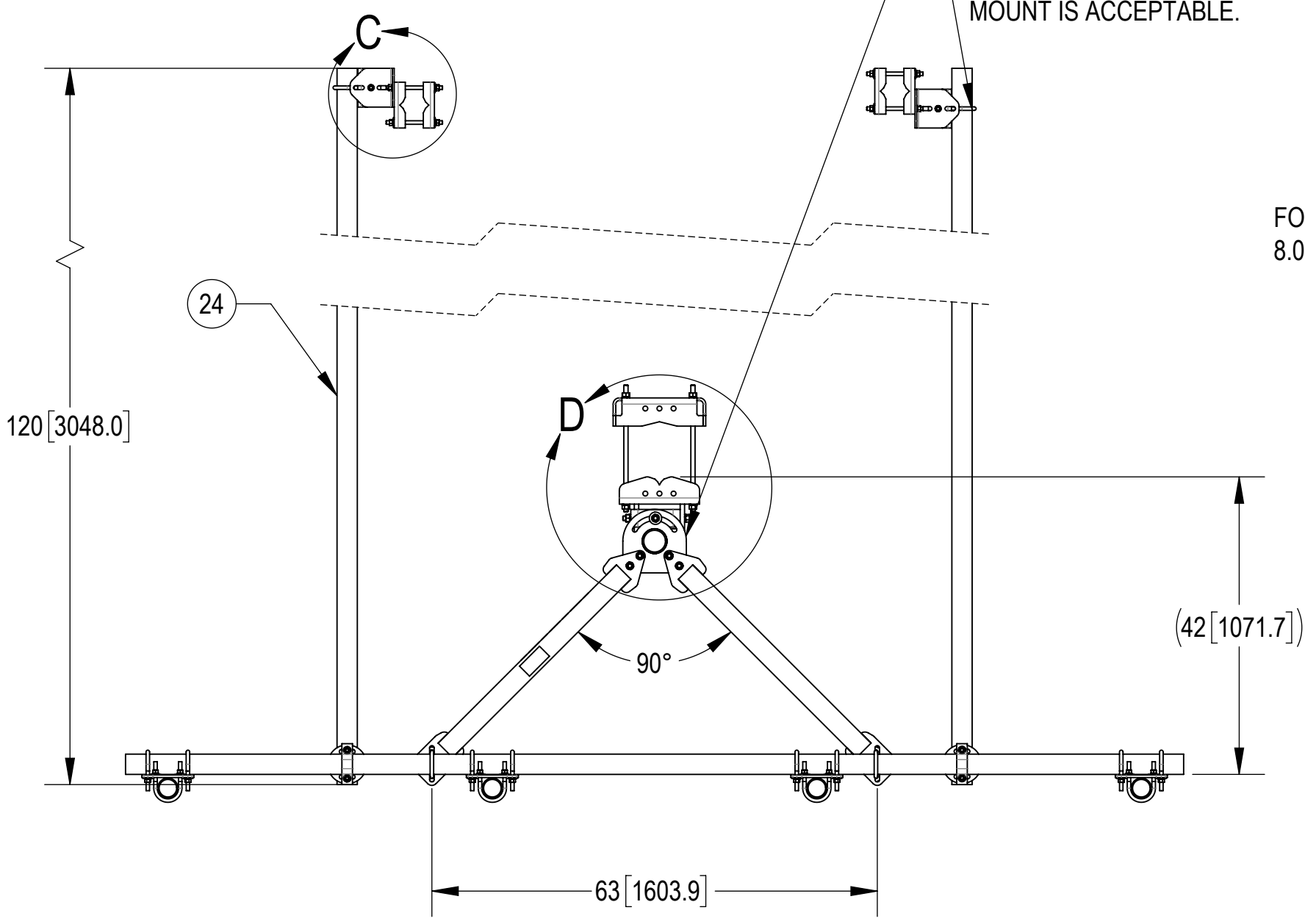
4

3

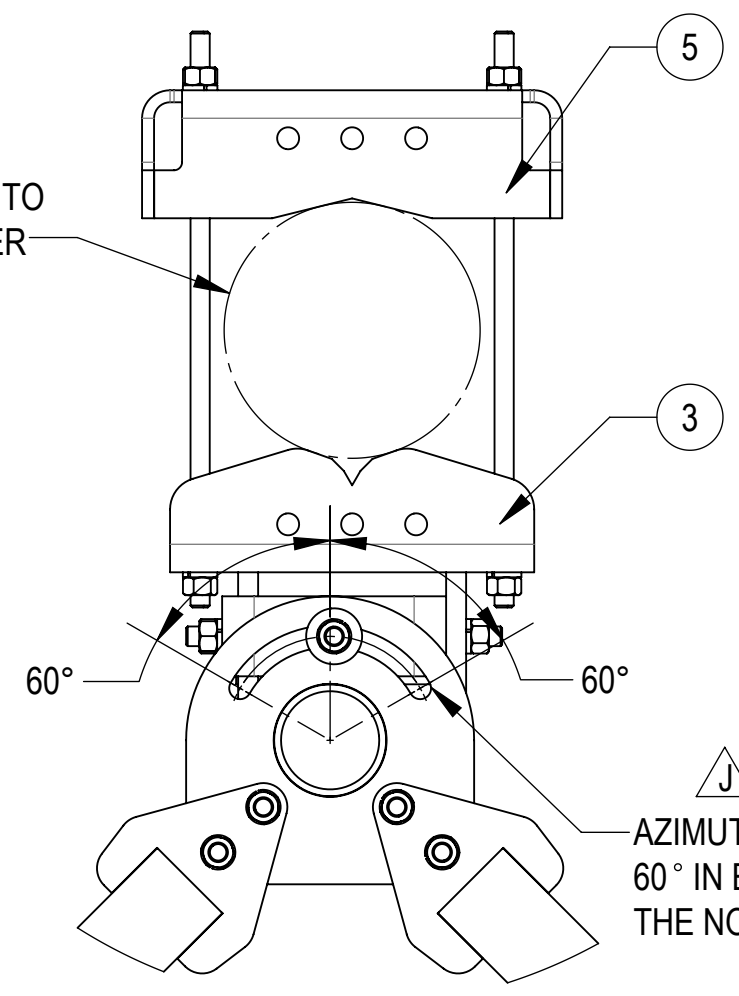
2

1

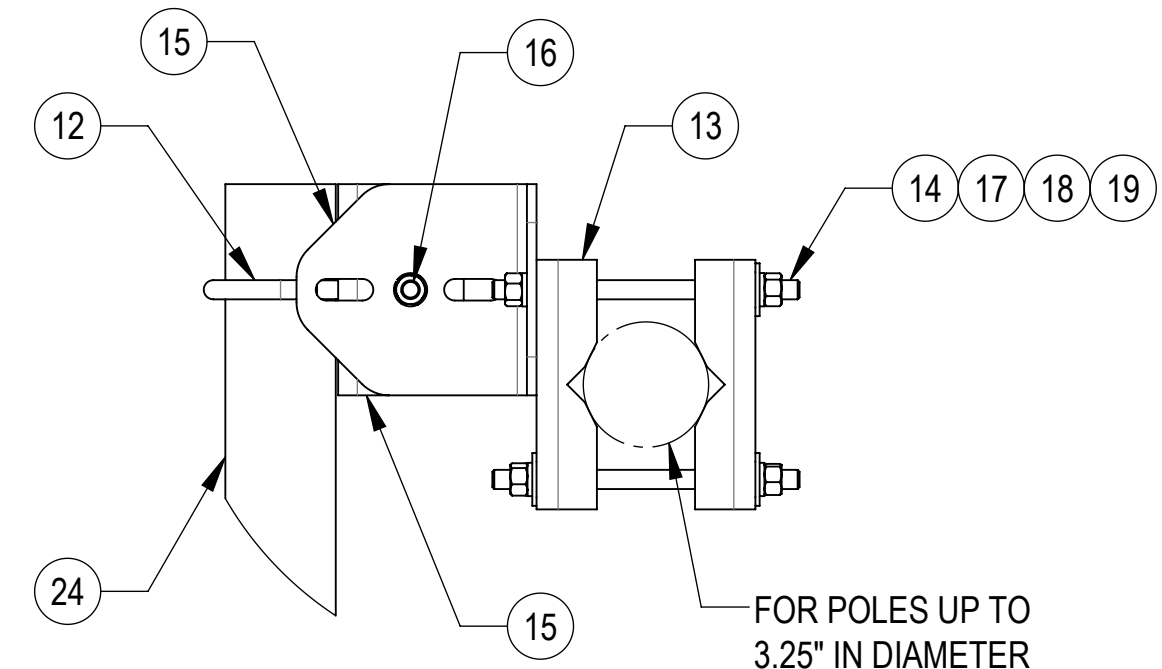
TIEBACK MUST BE CONNECTED TO A RIGID MEMBER THAT PROVIDES ADEQUATE SUPPORT WITHIN THE LIMITS NOTED IN THE TIEBACK ANGLE RANGE DETAIL. UNLESS APPROVED BY ENGINEER OF RECORD. SPINE STEM OF NEIGHBORING MOUNT IS ACCEPTABLE.



FOR POLES UP TO 8.0" IN DIAMETER



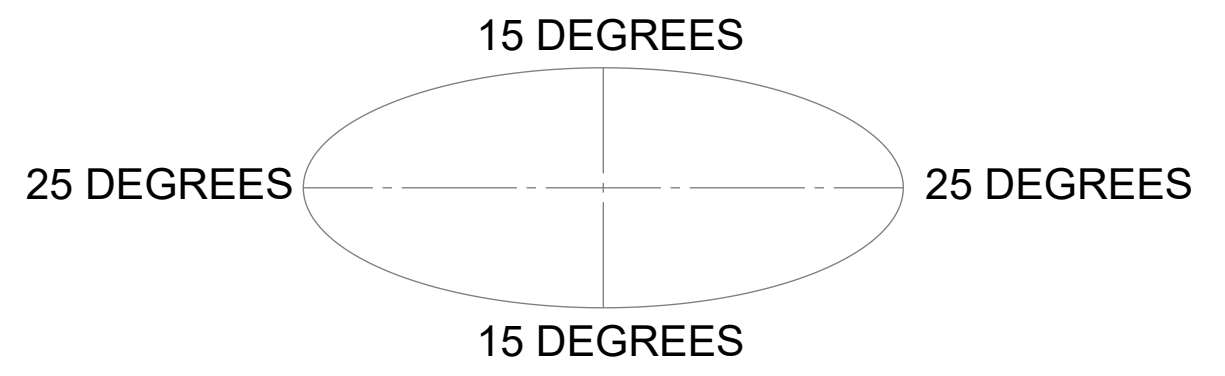
DETAIL D
SCALE 1 : 6



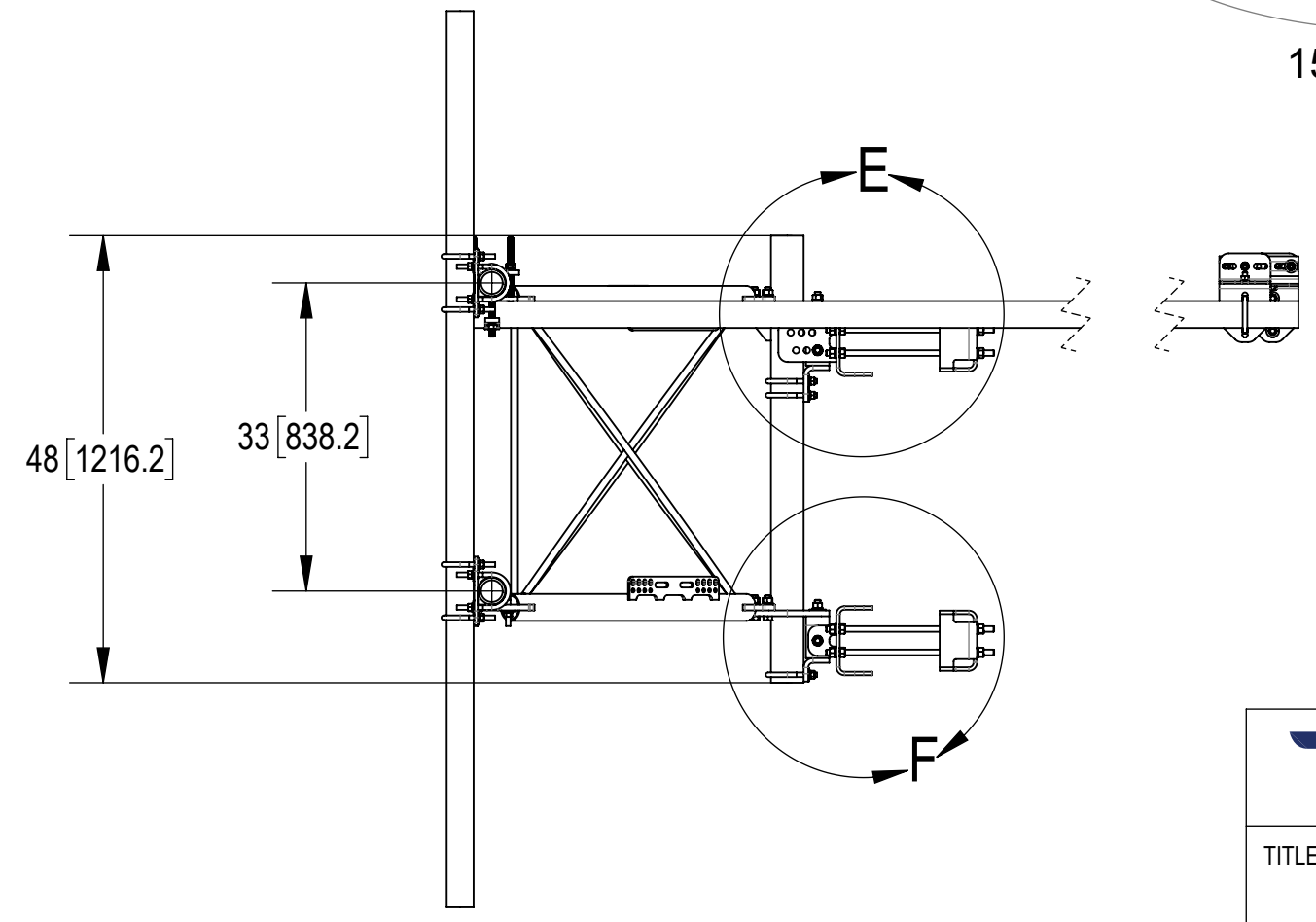
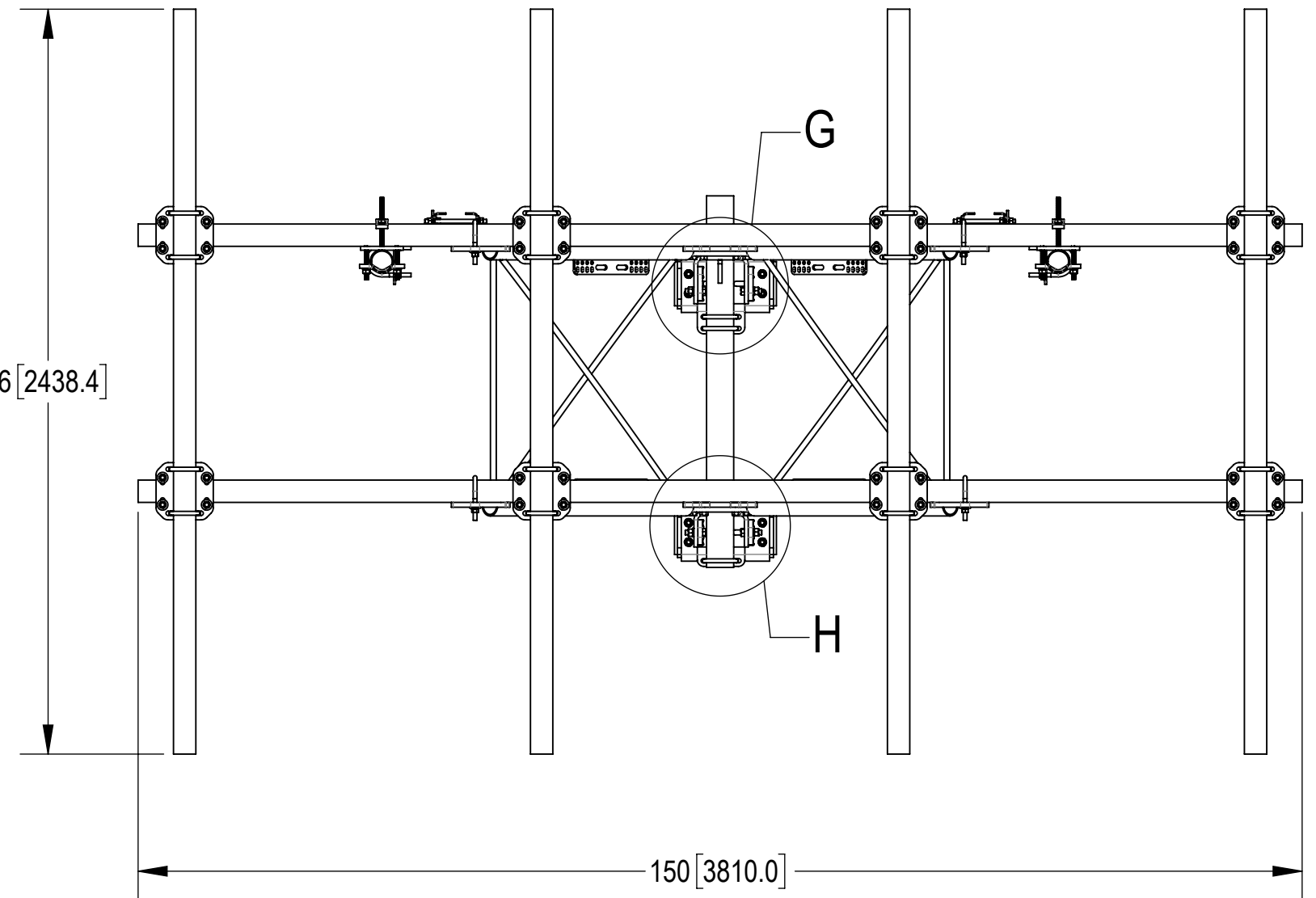
DETAIL C
SCALE 1 : 5

FOR POLES UP TO 3.25" IN DIAMETER

ALLOWABLE TIEBACK ANGLE
±15 DEGREES VERTICAL
±25 DEGREES HORIZONTAL



SFG23HDX-12-4-96 SHOWN FOR REFERENCE
(NOT ALL CONFIGURATIONS INCLUDE ALL ITEMS
SEE NOTES IN TABLE ON PAGE 3)



TOP
BOTTOM

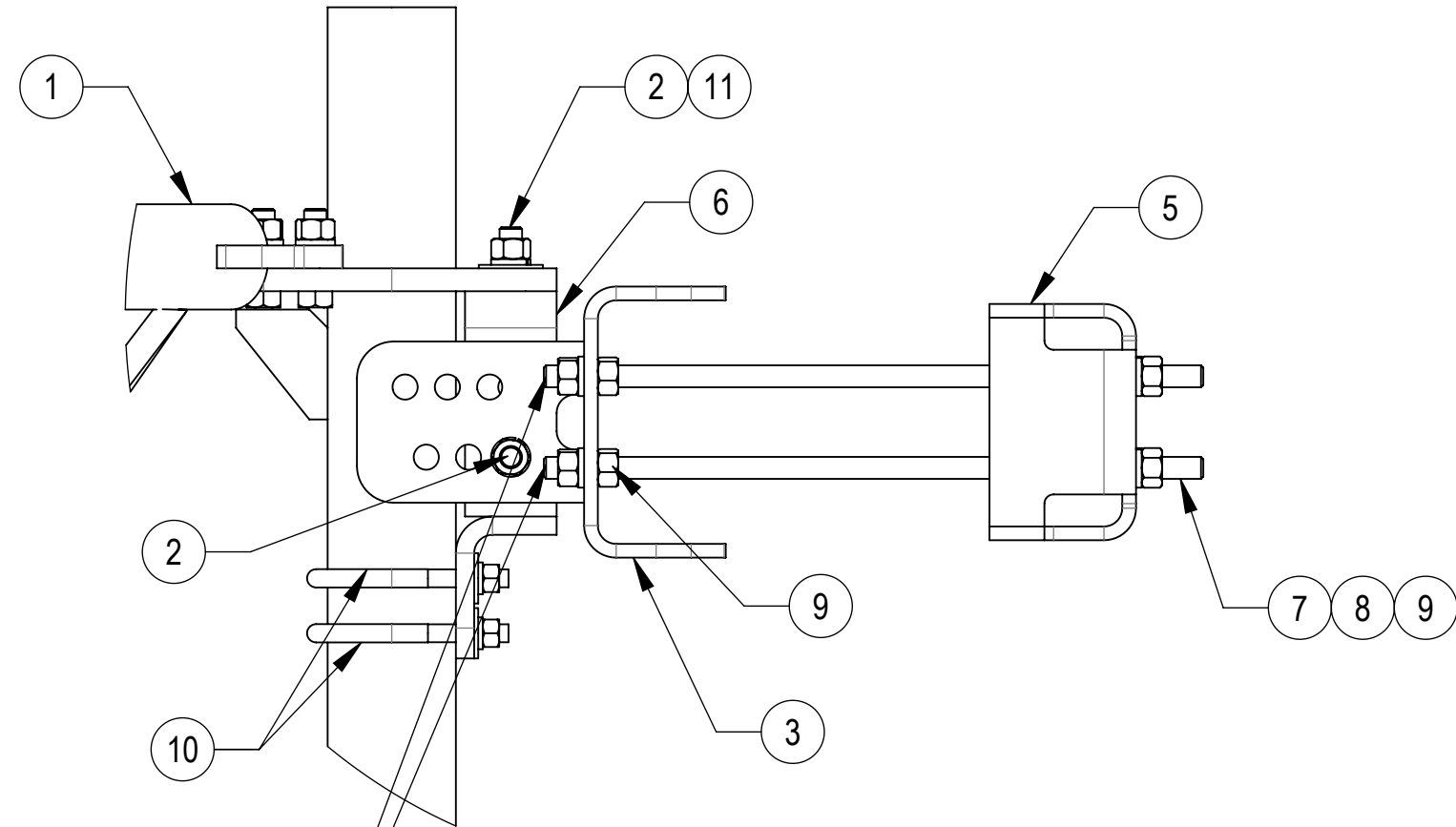
TALLEY®				
TITLE SECTOR FRAME, SFG23HDX SERIES				
SIZE C	SCALE 1:16	DOCUMENT NO. SFG23HDX SERIES		
DRAWING		VERSION	STATUS	REVISION
SHEET		06	RE	J
Confidential				SHEET 4 OF 12

4

3

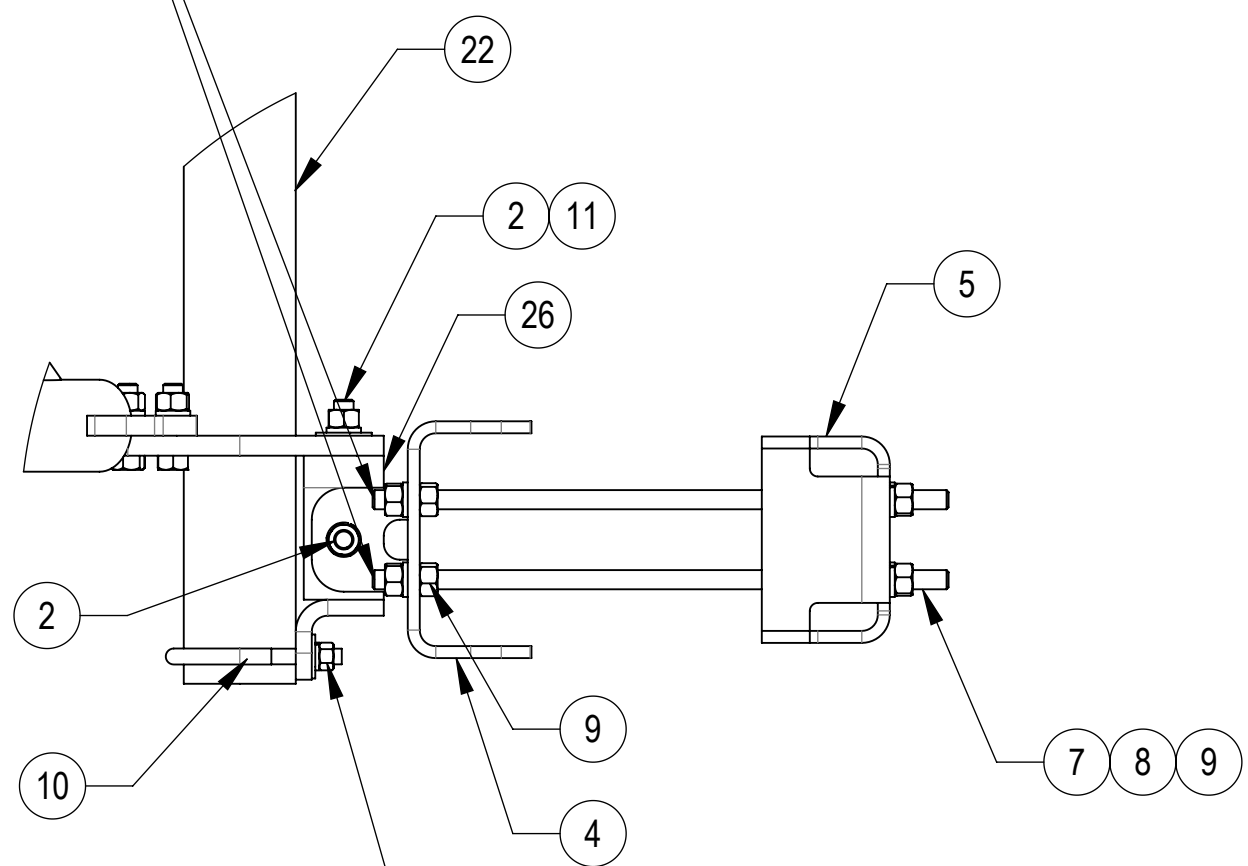
2

1



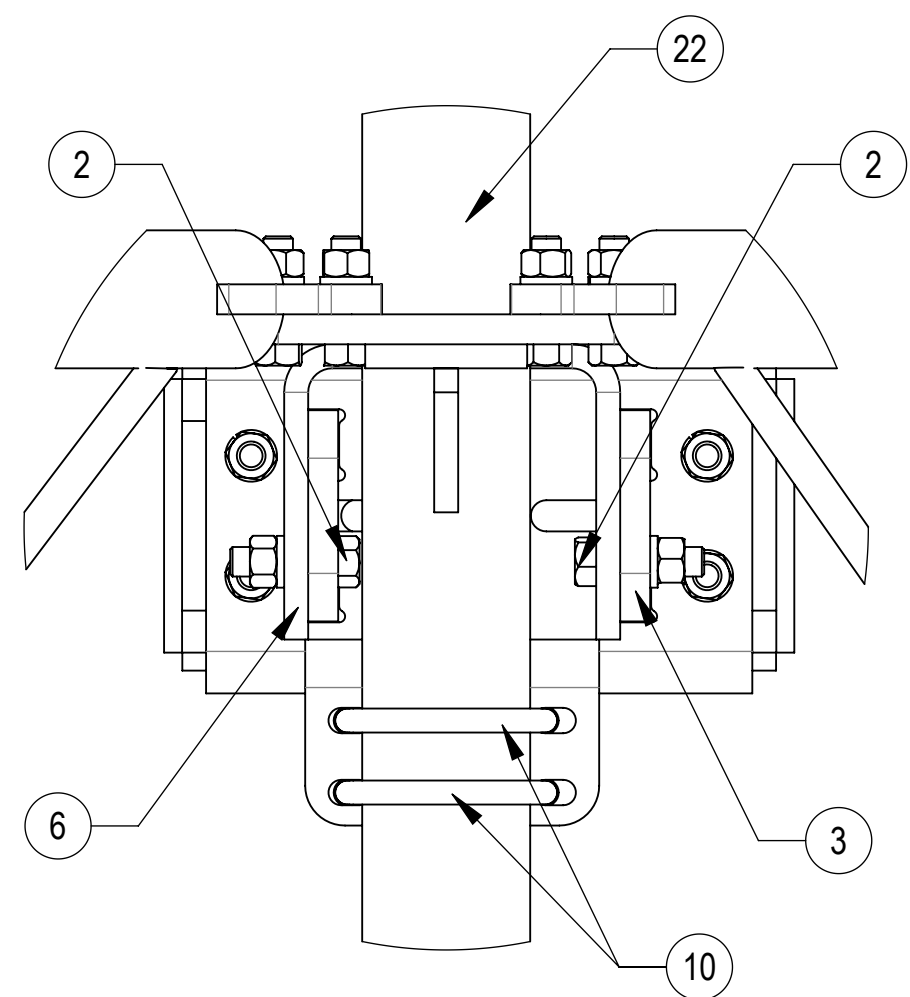
DETAIL E
SCALE 1 : 5

THE THREADED ROD CAN ONLY EXPOSE 4 TO 7 THREADS ON ONE SIDE OF THE BRACKET, WHICH IS TO PREVENT INTERFERENCE WITH THE SIDE BOLTS

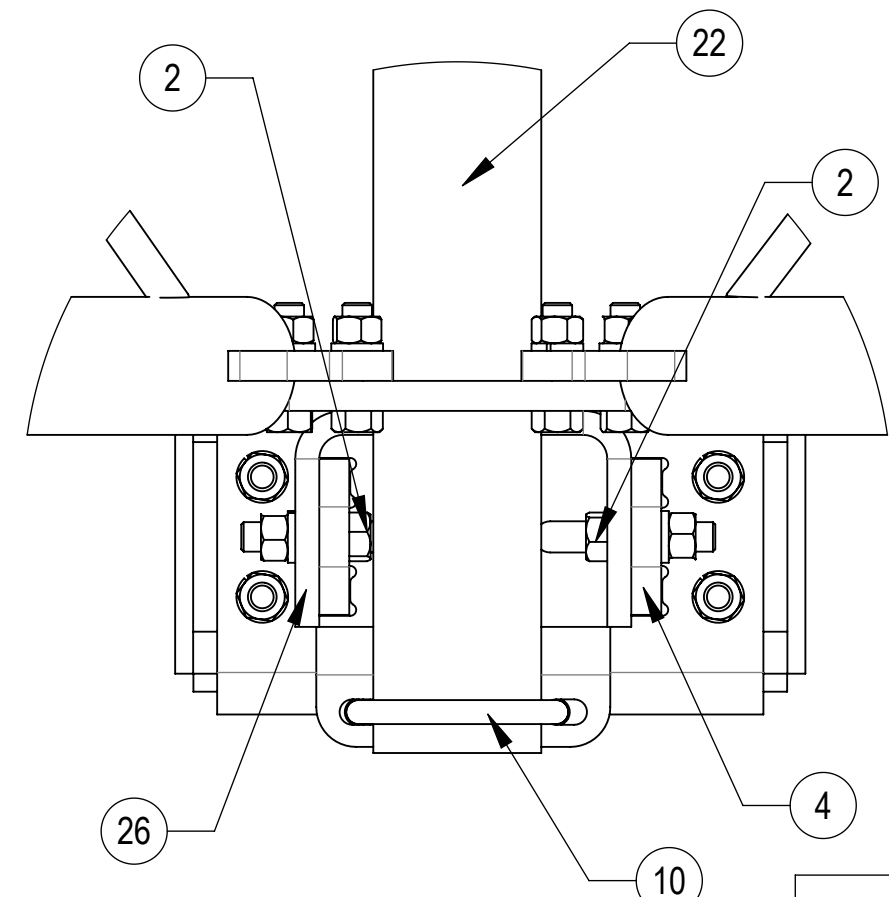


DETAIL F
SCALE 1 : 6

DO NOT OVER TIGHTEN, END OF POLE CAN BE DAMAGED



DETAIL G
SCALE 1 : 4



DETAIL H
SCALE 1 : 4

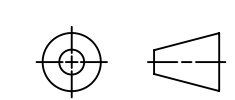


TITLE
SECTOR FRAME, SFG23HDX SERIES

SIZE C	SCALE 1:16	DOCUMENT NO. SFG23HDX SERIES
------------------	----------------------	---------------------------------

DRAWING			SHEET 5 OF 12
VERSION	STATUS	REVISION	
06	RE	J	

Confidential



4

3

2

1

D

D

C

C

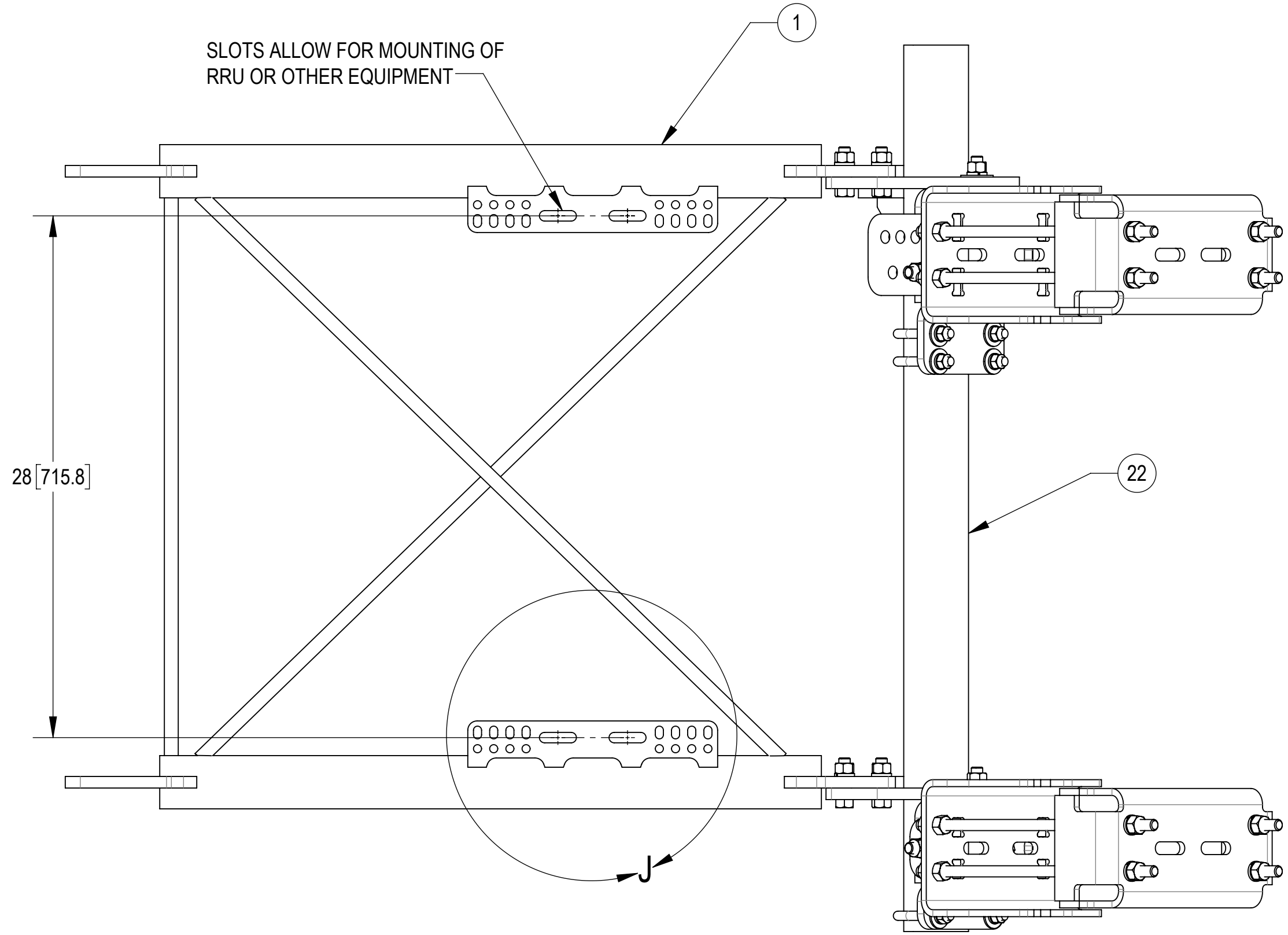
B

B

A

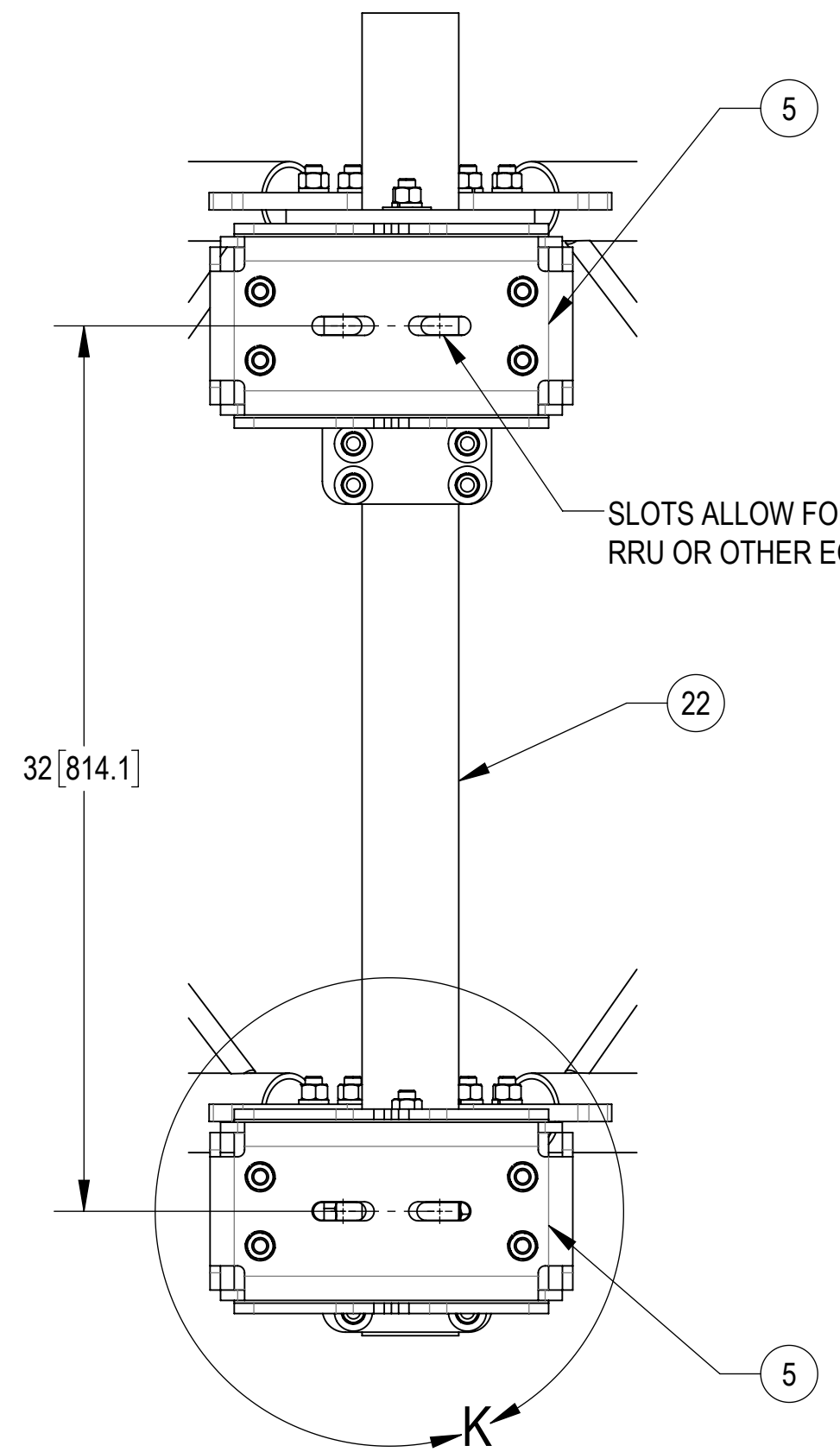
A

SLOTS ALLOW FOR MOUNTING OF RRU OR OTHER EQUIPMENT

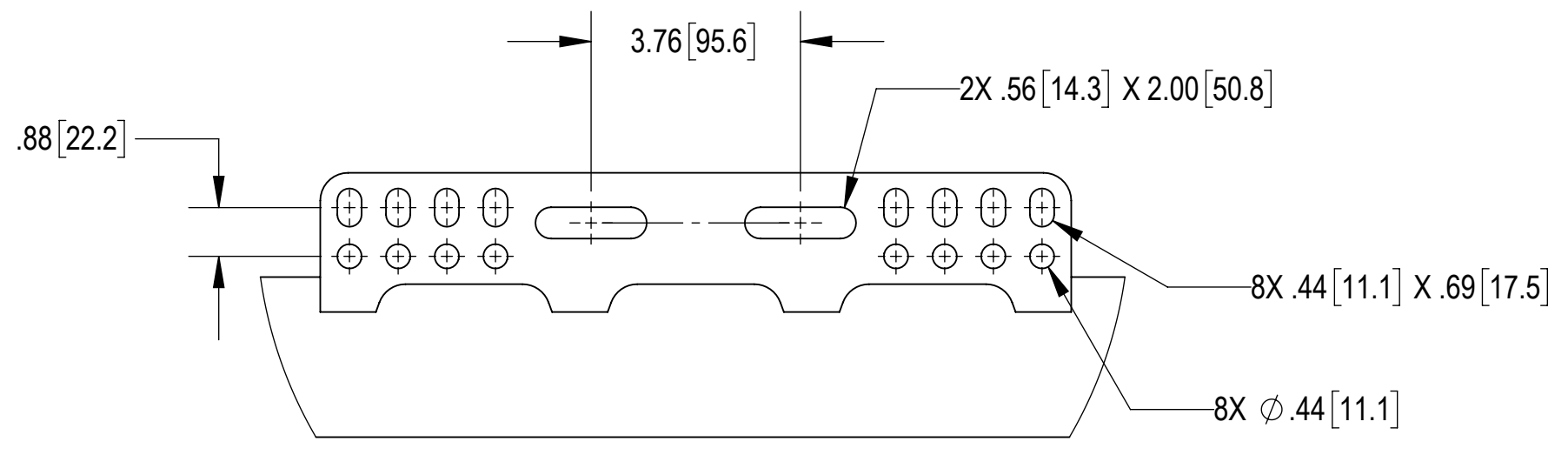


SIDE VIEW

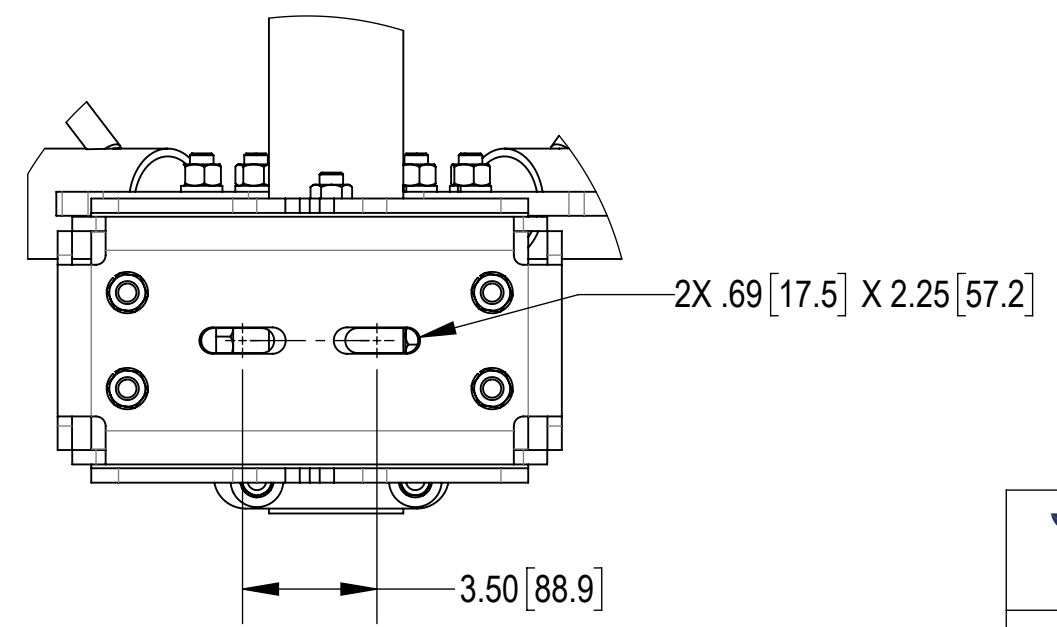
SLOTS ALLOW FOR MOUNTING OF RRU OR OTHER EQUIPMENT




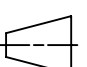
BACK CROP VIEW



DETAIL J
SCALE 1 : 3



DETAIL K
SCALE 1 : 5

TALLEY ®					
TITLE SECTOR FRAME, SFG23HDX SERIES					
SIZE C	SCALE 1:12	DOCUMENT NO. SFG23HDX SERIES			
 		DRAWING			SHEET 6 OF 12
		VERSION 06	STATUS RE	REVISION J	

Confidential

4

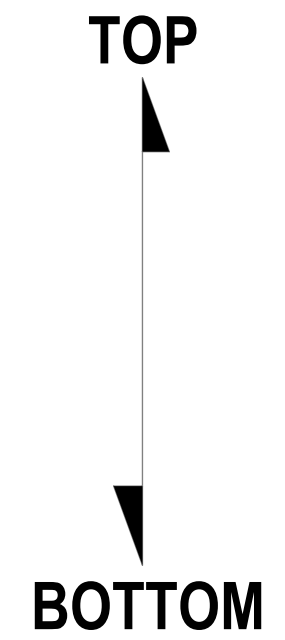
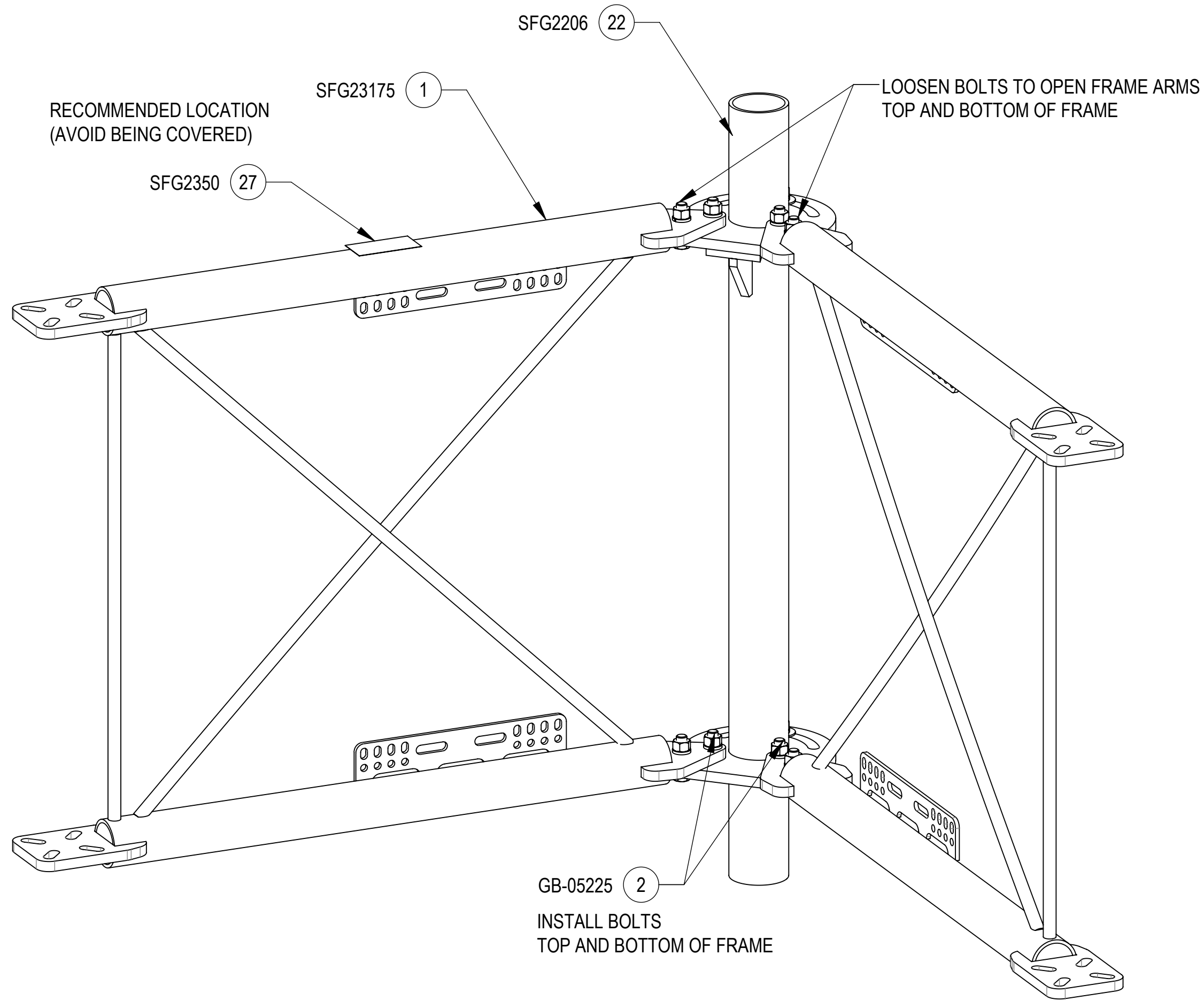
3

2


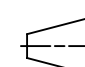
1

INSTALLATION SEQUENCE - REFERENCE ONLY

STEP 1: LOOSEN BOLT KITS (GB-05225) TO OPEN FRAME SUPPORT ARMS. INSTALL ADDITIONAL 4X BOLT KITS (GB-05225). PLACE LABEL (SFG2350) ON TOP OF STANDOFF ARMS (SFG23175). (WIPE GALVANIZED SURFACE WITH ALCOHOL CLEANER BEFORE APPLYING LABEL)



ISO VIEW

TALLEY®				
TITLE SECTOR FRAME, SFG23HDX SERIES				
SIZE C	SCALE 1:6	DOCUMENT NO. SFG23HDX SERIES		
 	DRAWING			SHEET 7 OF 12
	VERSION 06	STATUS RE	REVISION J	

Confidential

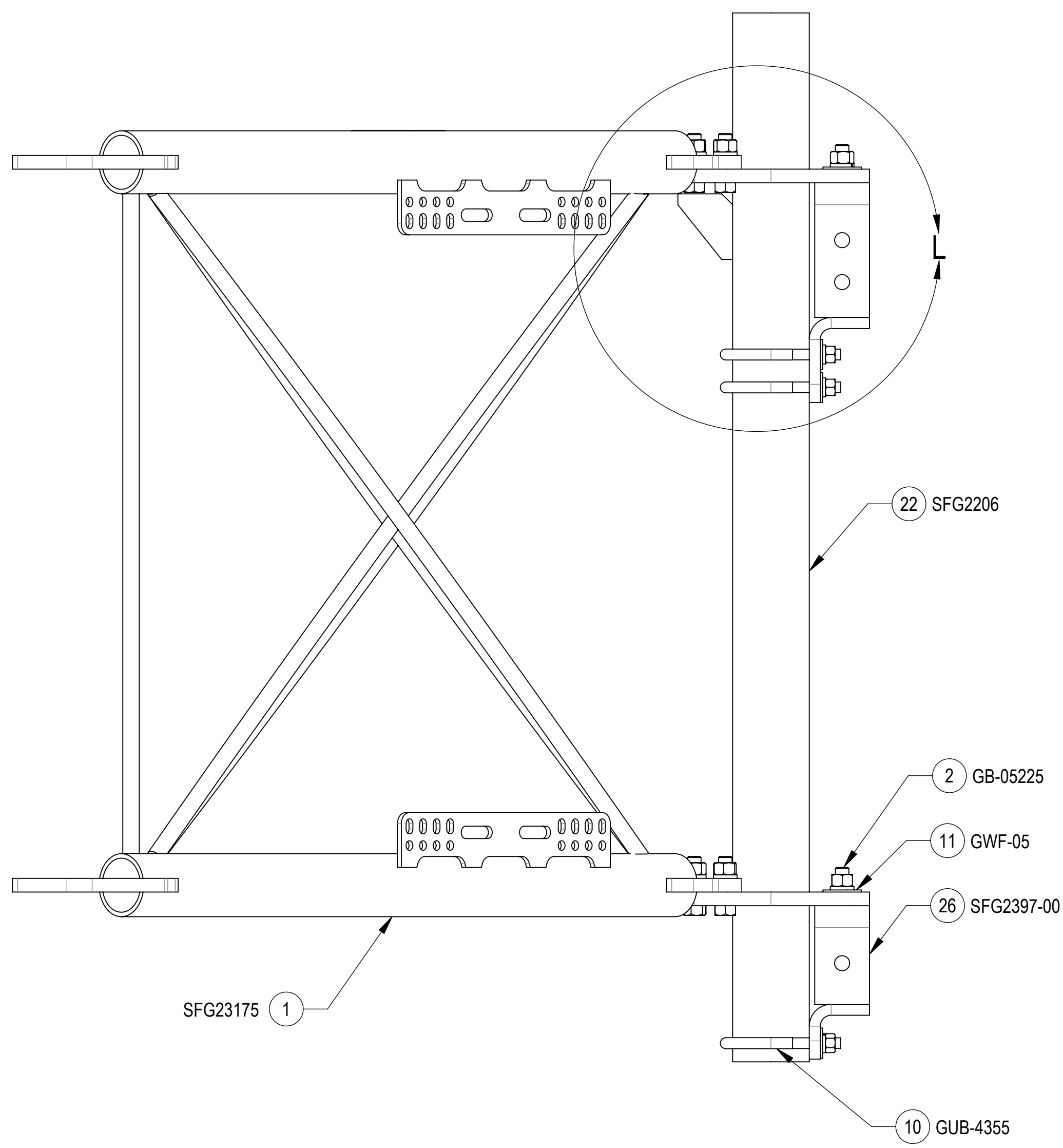
4

3

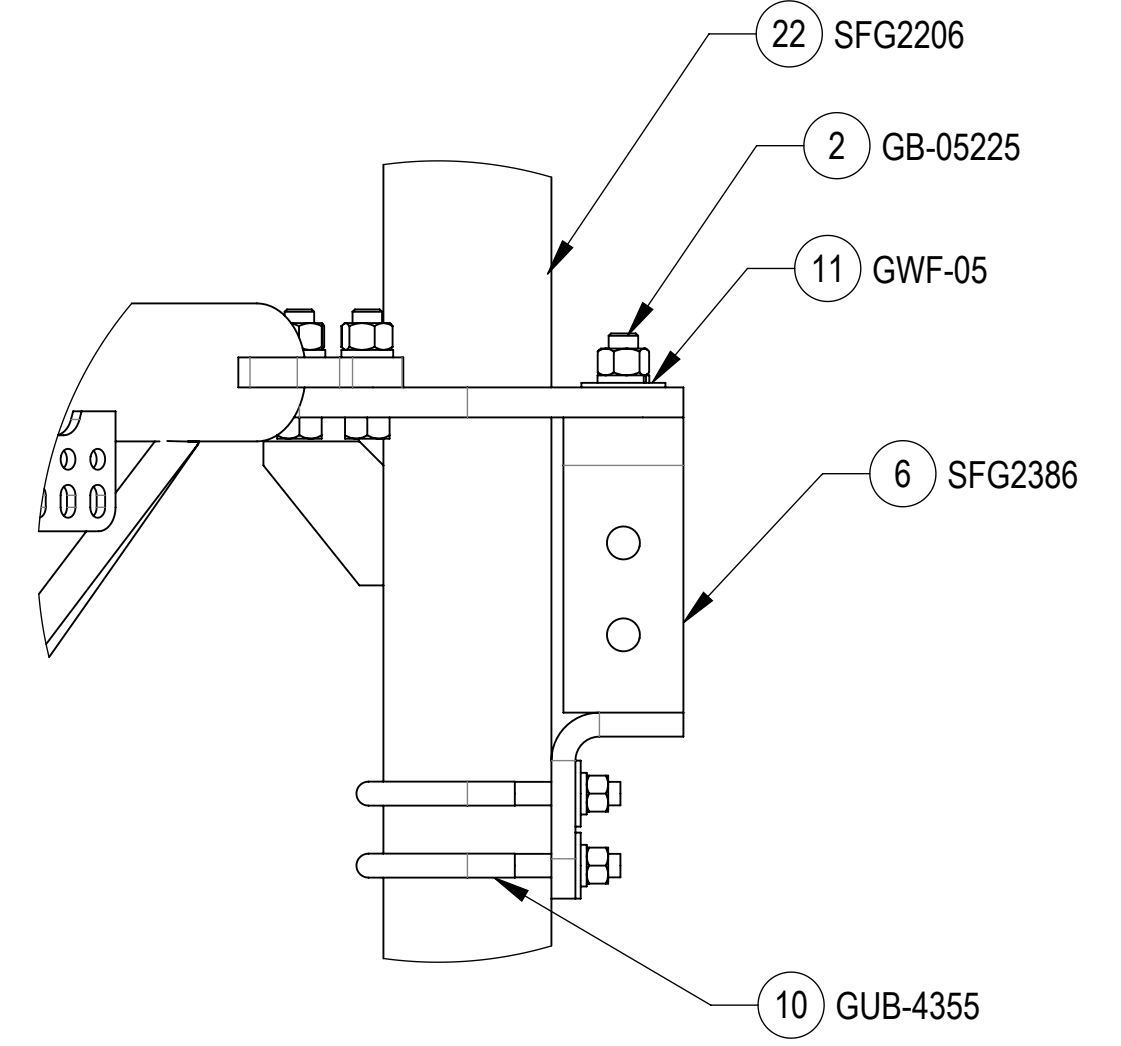
2

1

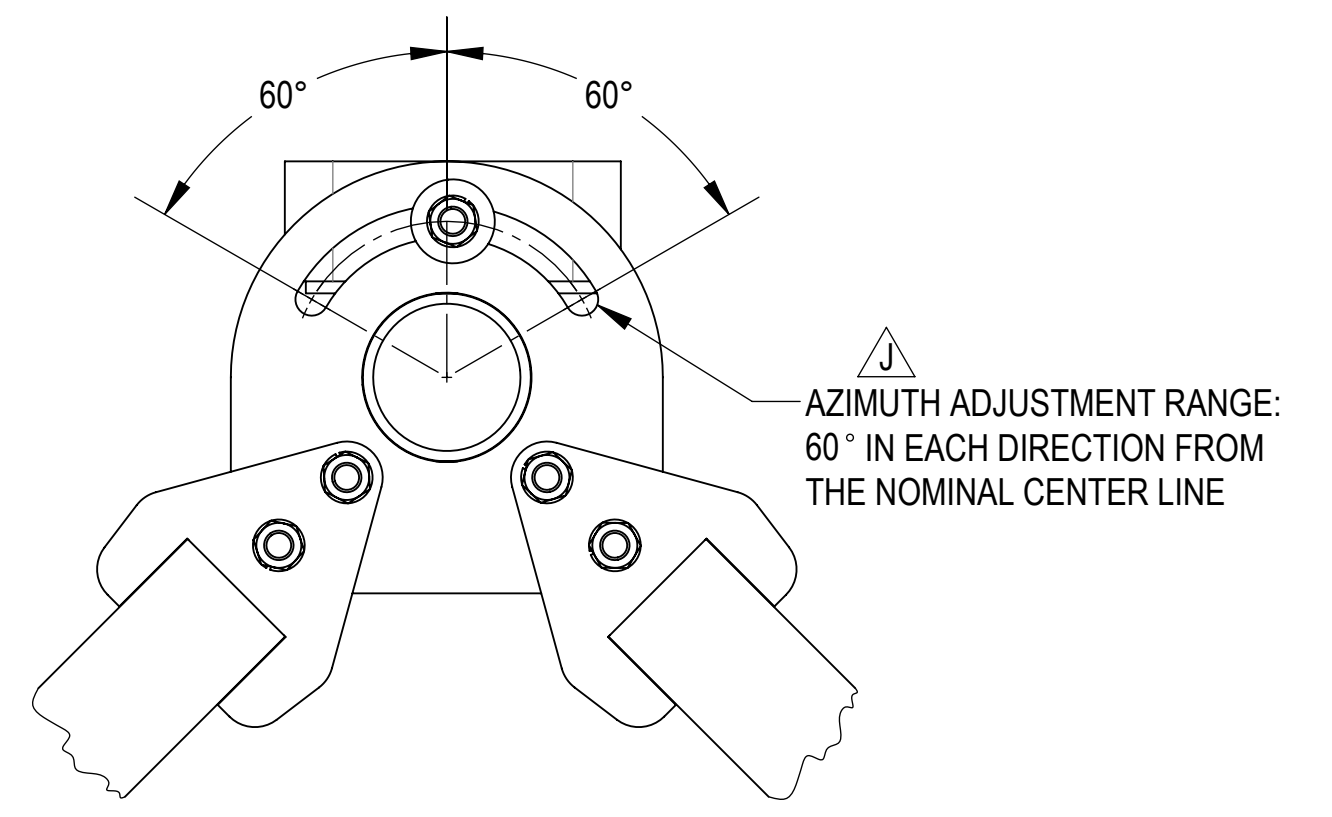
**STEP 2: AT TOP, ATTACH AZIMUTH/TAPER BRACKET (SFG2386) TO BACK VERTICAL ARM MOUNT (SFG2206) USING BOLT KITS (GB-05225), U-BOLTS (GUB-4355) AND FLAT WASHERS (GWF-05).
 AT BOTTOM, ATTACH AZIMUTH/TAPER BRACKET (SFG2397-00) TO BACK VERTICAL ARM MOUNT (SFG2206) USING BOLT KITS (GB-05225), U-BOLTS (GUB-4355) AND FLAT WASHERS (GWF-05).**



SIDE VIEW



DETAIL L
SCALE 1 : 4



TOP CROP VIEW

TOP
↓
BOTTOM



TITLE				
SECTOR FRAME, SFG23HDX SERIES				
SIZE	SCALE	DOCUMENT NO.		
C	1:4	SFG23HDX SERIES		
		DRAWING		SHEET
		VERSION	STATUS	REVISION
		06	RE	J
				8 OF 12

Confidential

4

3

2

1

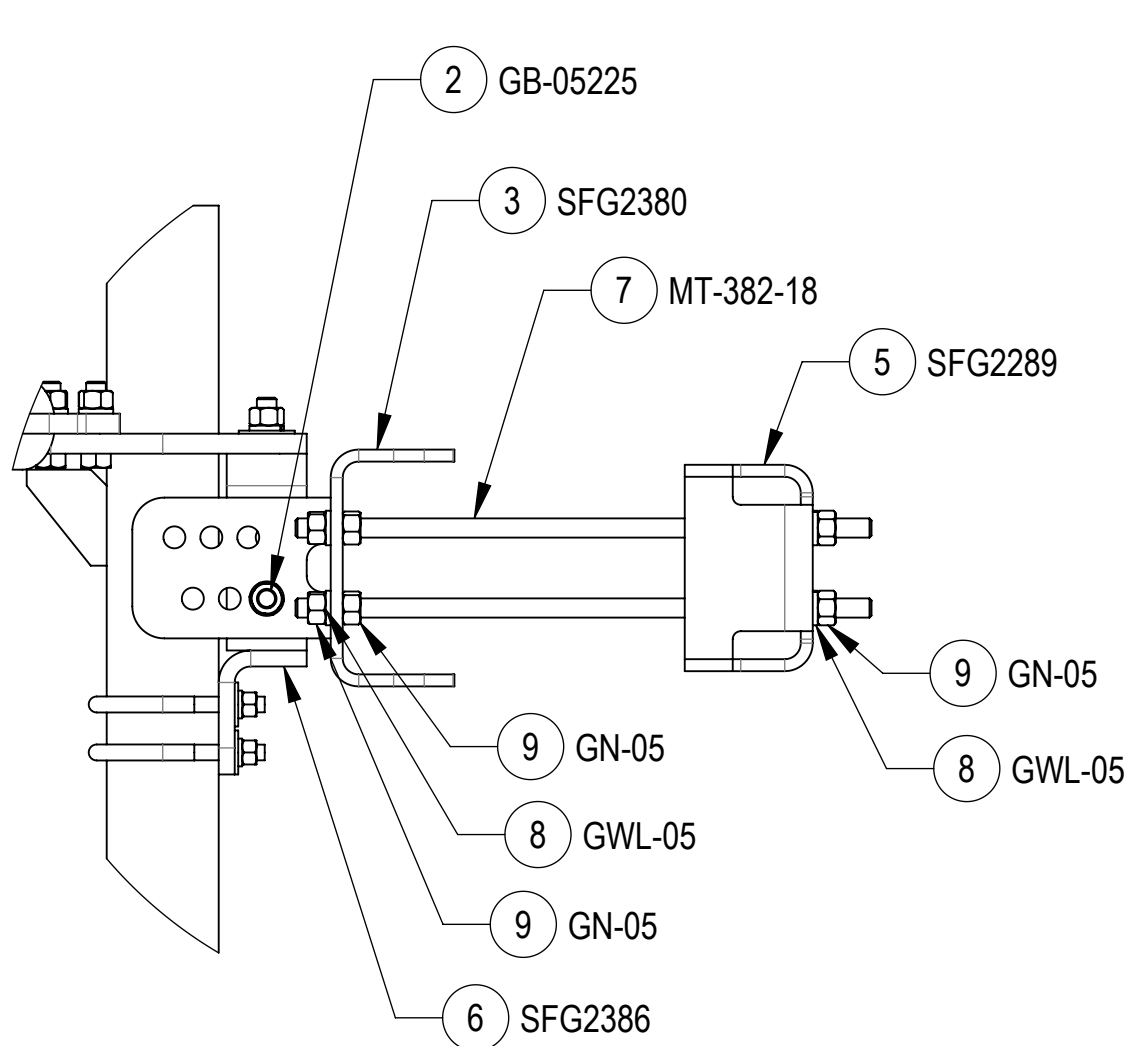
4

3

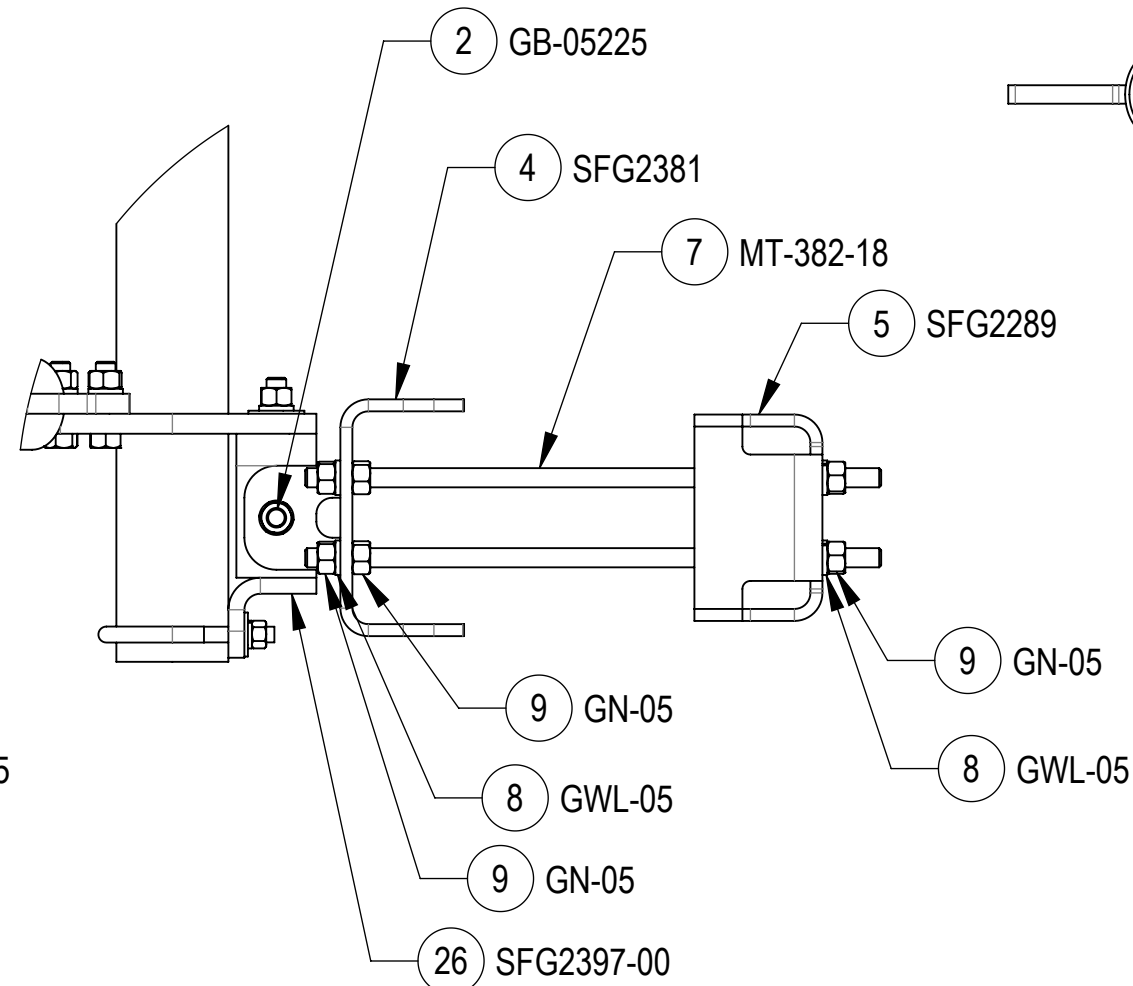
2

1

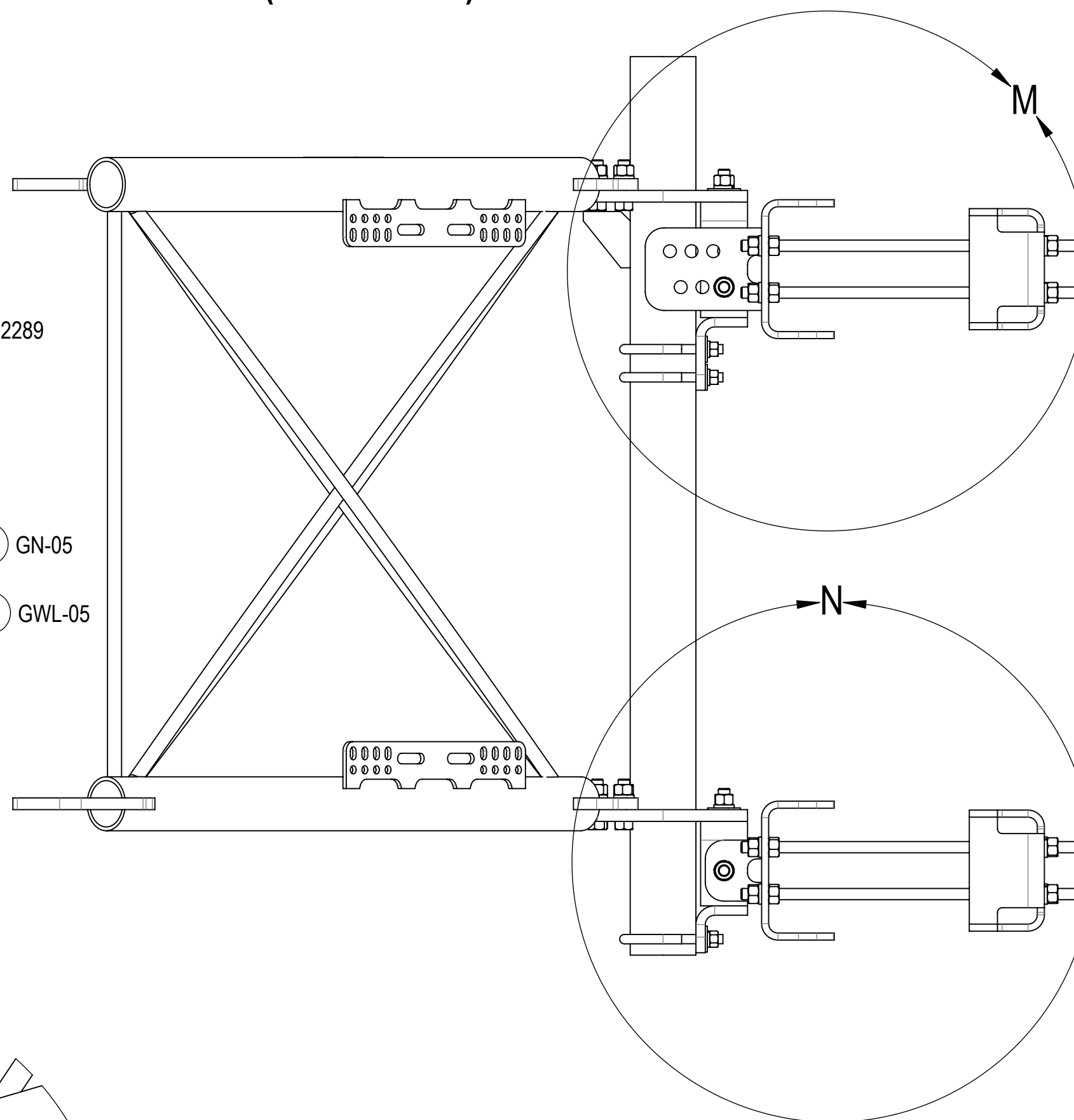
STEP 3: AT TOP, ATTACH TOP TAPER BRACKET (SFG2380) AZIMUTH/TAPER BRACKET (SFG2386) USING BOLTS KITS (GB-05225); AT BOTTOM, ATTACH LOWER TOWER LEG BRACKET (SFG2381) TO AZIMUTH/TAPER BRACKET (SFG2397-00) USING BOLTS KITS (GB-05225).



DETAIL M
SCALE 1 : 6

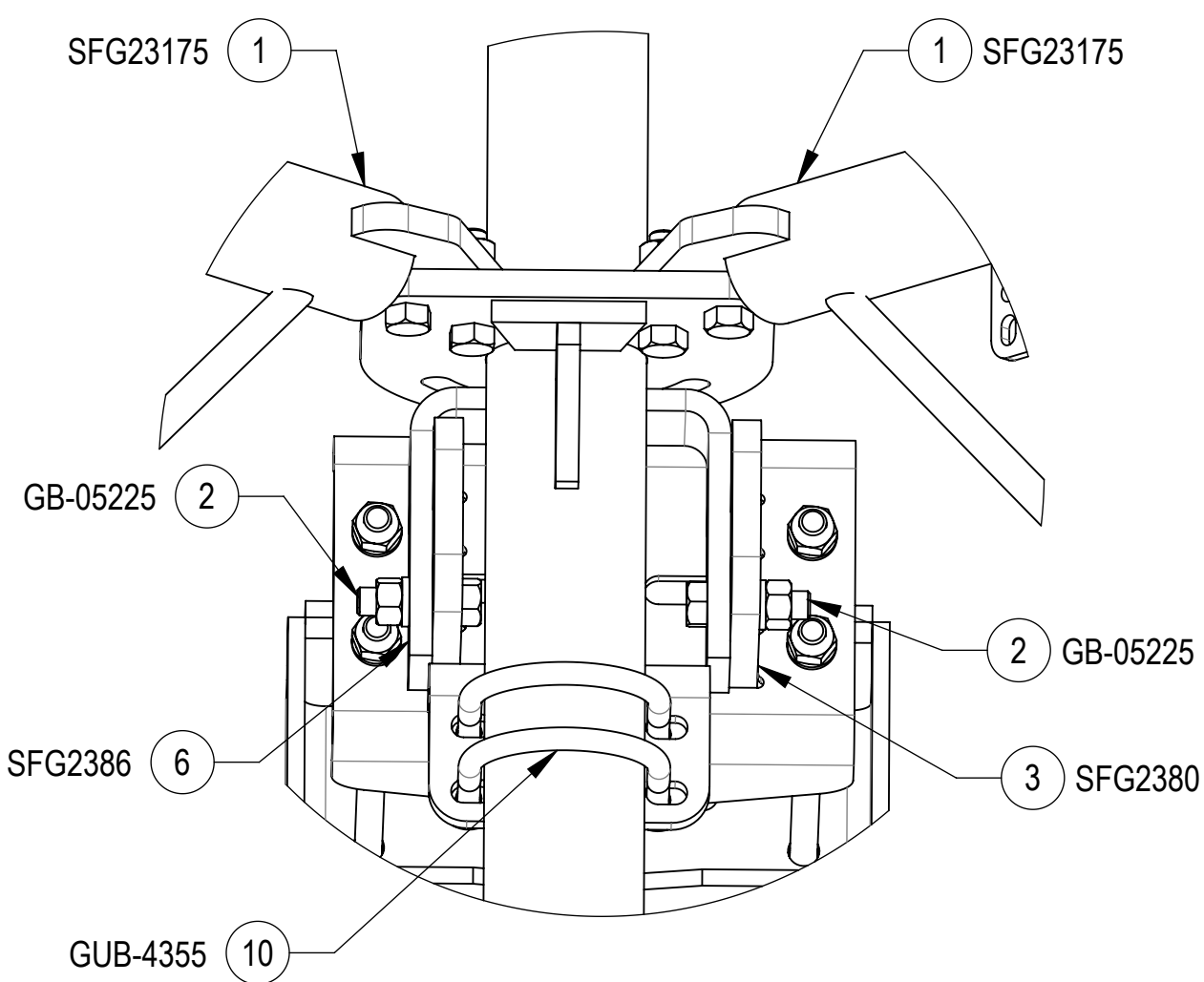


DETAIL N
SCALE 1 : 6

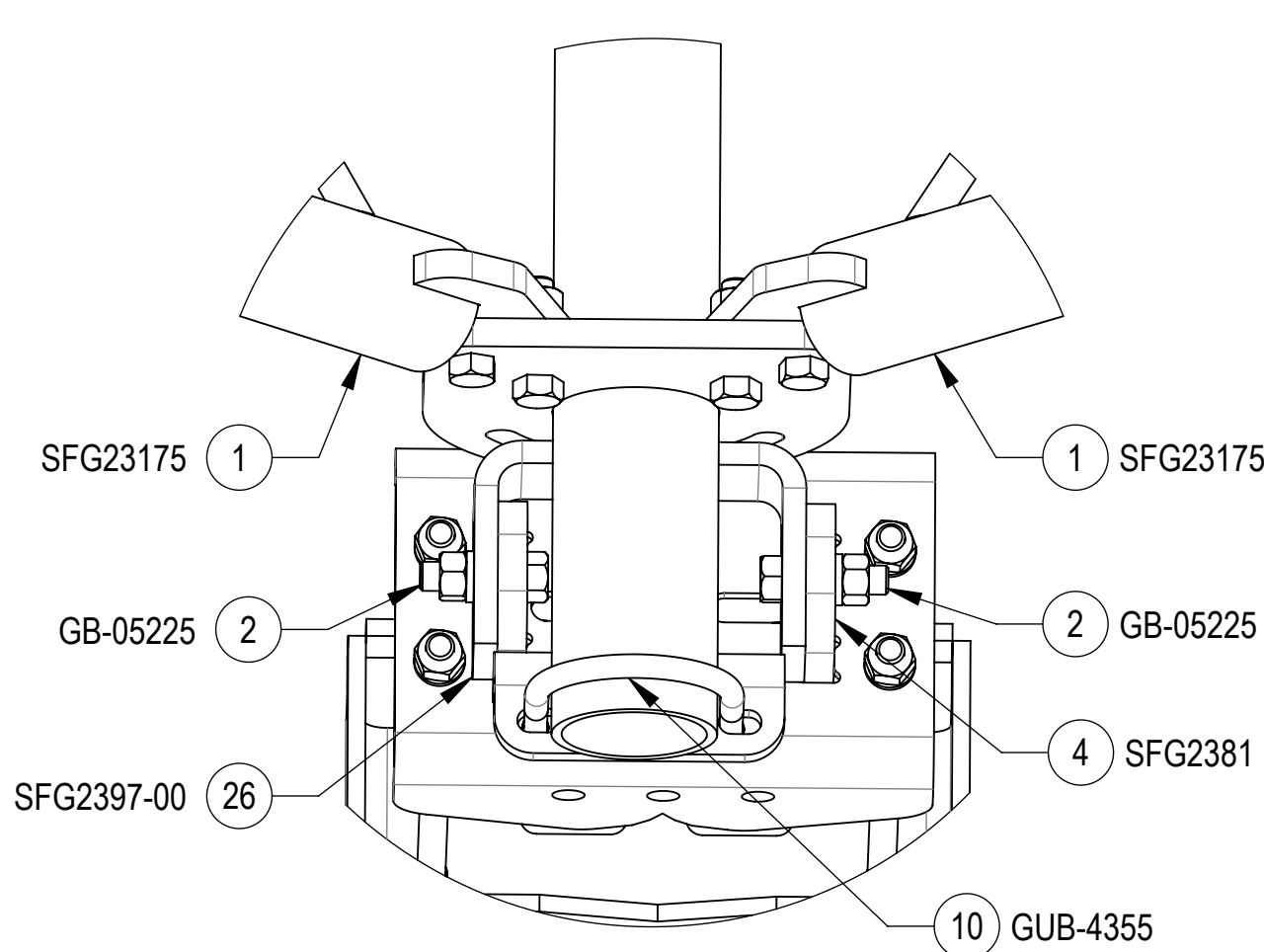


TOP

BOTTOM



DETAIL ISO TOP ROTATED VIEW
SCALE 1 : 4



DETAIL ISO BOTTOM ROTATED VIEW
SCALE 1 : 4

TALLEY				
TITLE SECTOR FRAME, SFG23HDX SERIES				
SIZE C	SCALE 1:6	DOCUMENT NO. SFG23HDX SERIES		
		DRAWING		SHEET 9 OF 12
		VERSION 06	STATUS RE	

Confidential

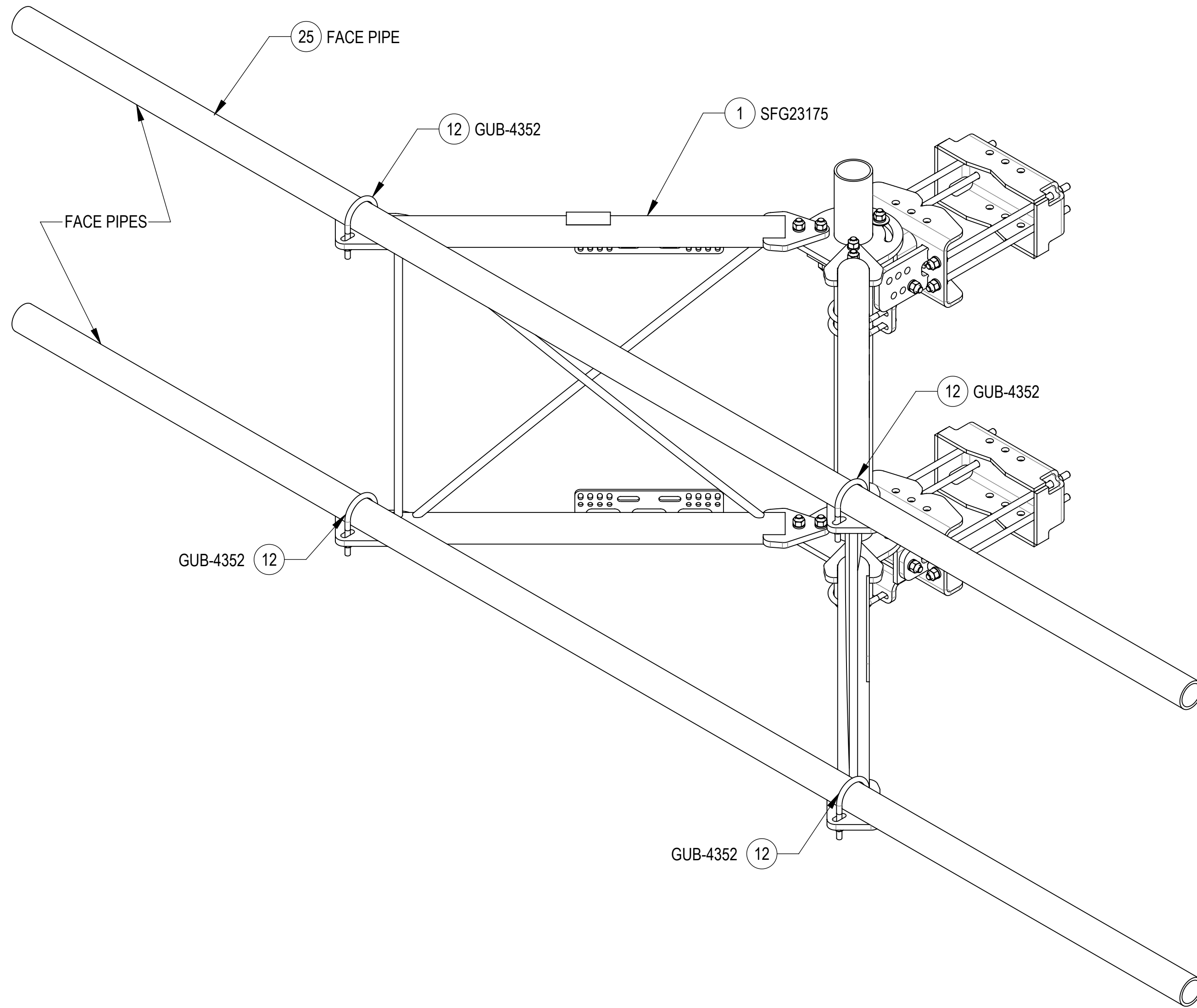
4

3

2

1

STEP 4: ATTACH FACE PIPES TO STANDOFF ARMS (SFG23175) USING U-BOLTS (GUB-4352).



ISO VIEW



TITLE
SECTOR FRAME, SFG23HDX SERIES

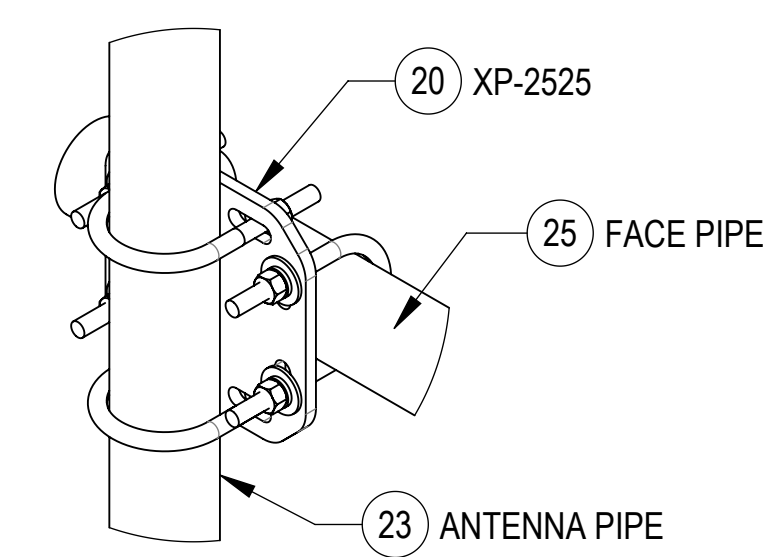
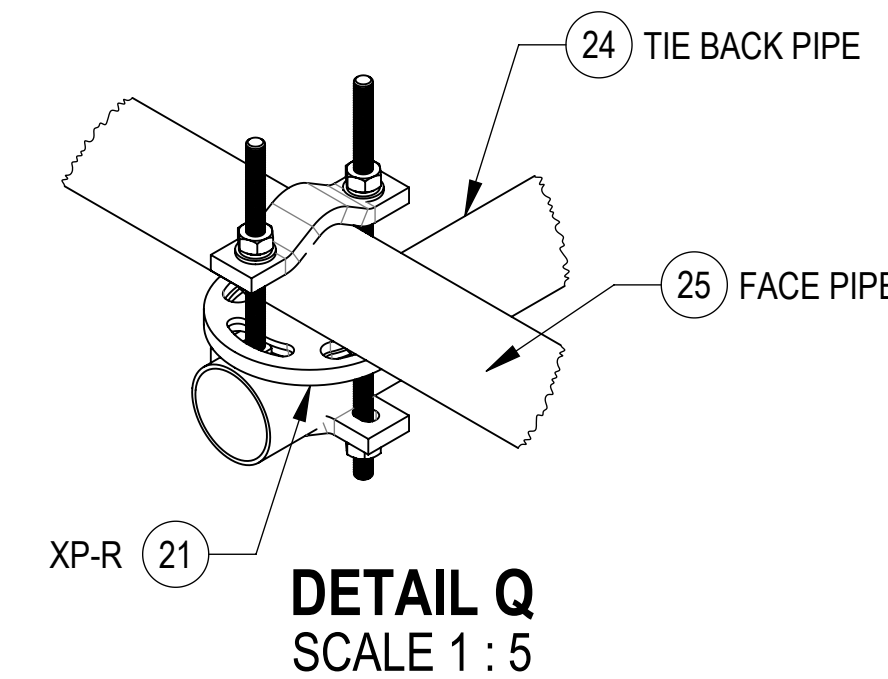
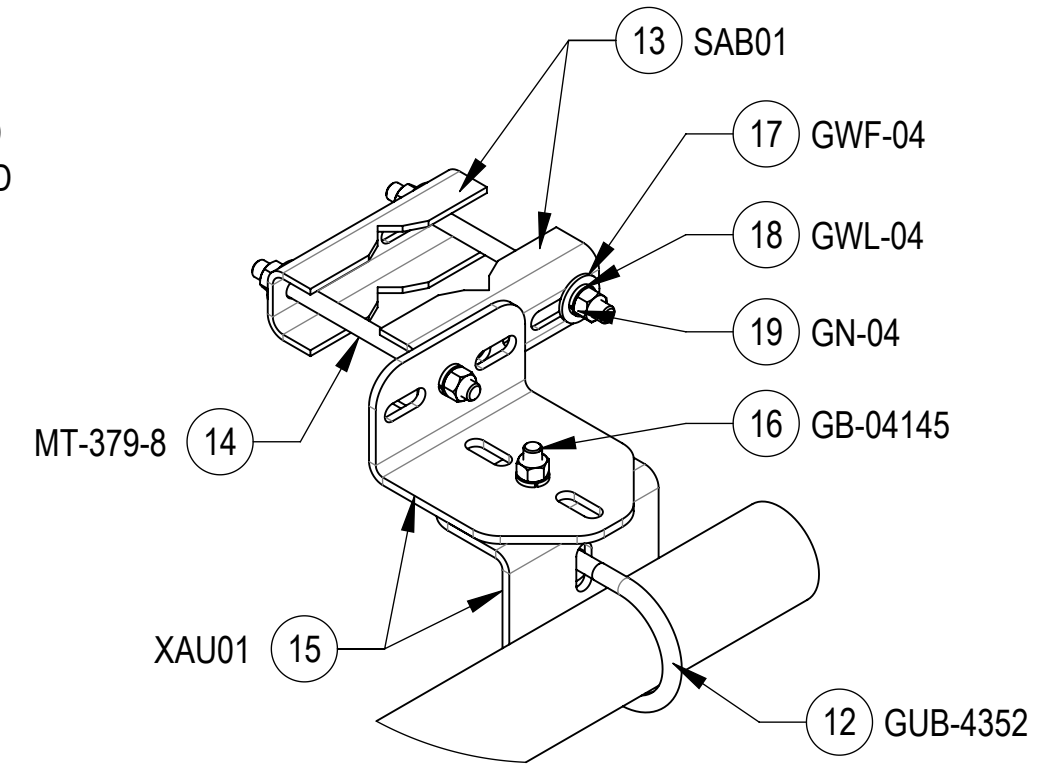
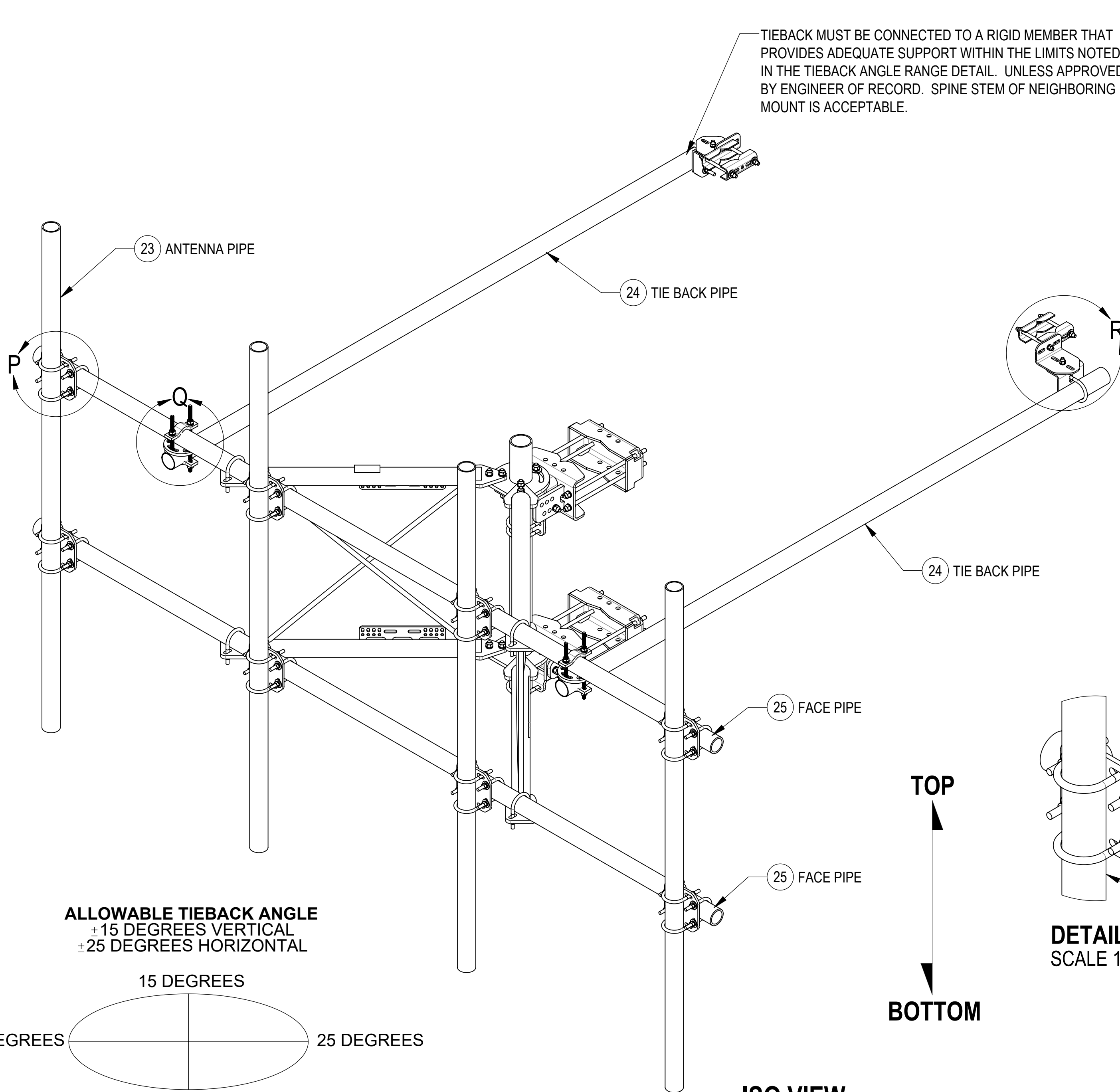
SIZE C	SCALE 1:16	DOCUMENT NO. SFG23HDX SERIES
------------------	----------------------	---------------------------------

	DRAWING			SHEET 10 OF 12
	VERSION 06	STATUS RE	REVISION J	

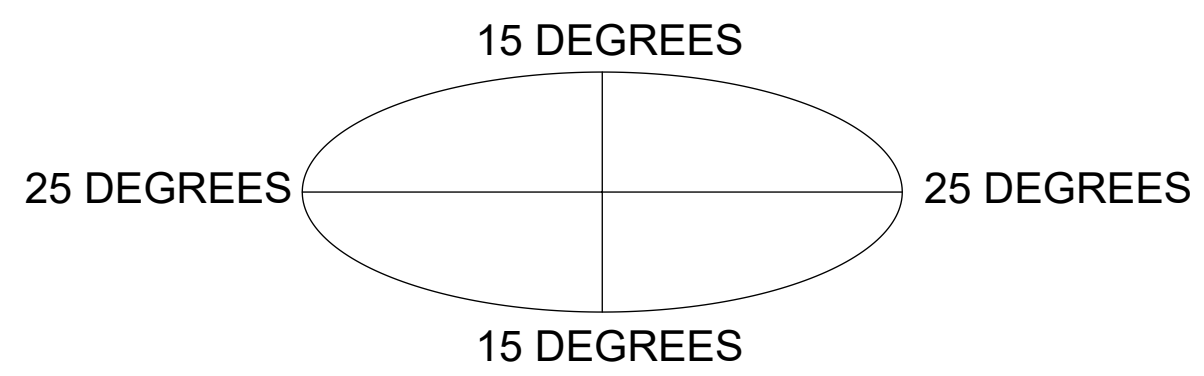
Confidential

**STEP 5: ATTACH ANTENNA PIPES TO FACE PIPES USING CROSSOVER PLATE KITS (XP-2525).
ATTACH TIE BACK PIPES TO FACE PIPES USING ROUND CROSSOVER PLATE KITS (XP-R).**

TIEBACK MUST BE CONNECTED TO A RIGID MEMBER THAT PROVIDES ADEQUATE SUPPORT WITHIN THE LIMITS NOTED IN THE TIEBACK ANGLE RANGE DETAIL. UNLESS APPROVED BY ENGINEER OF RECORD. SPINE STEM OF NEIGHBORING MOUNT IS ACCEPTABLE.



ALLOWABLE TIEBACK ANGLE
±15 DEGREES VERTICAL
±25 DEGREES HORIZONTAL



TOP
BOTTOM

ISO VIEW

TALLEY					
TITLE SECTOR FRAME, SFG23HDX SERIES					
SIZE C	SCALE 1:12	DOCUMENT NO. SFG23HDX SERIES			
		DRAWING			SHEET 11 OF 12
		VERSION 06	STATUS RE	REVISION J	

Confidential

4

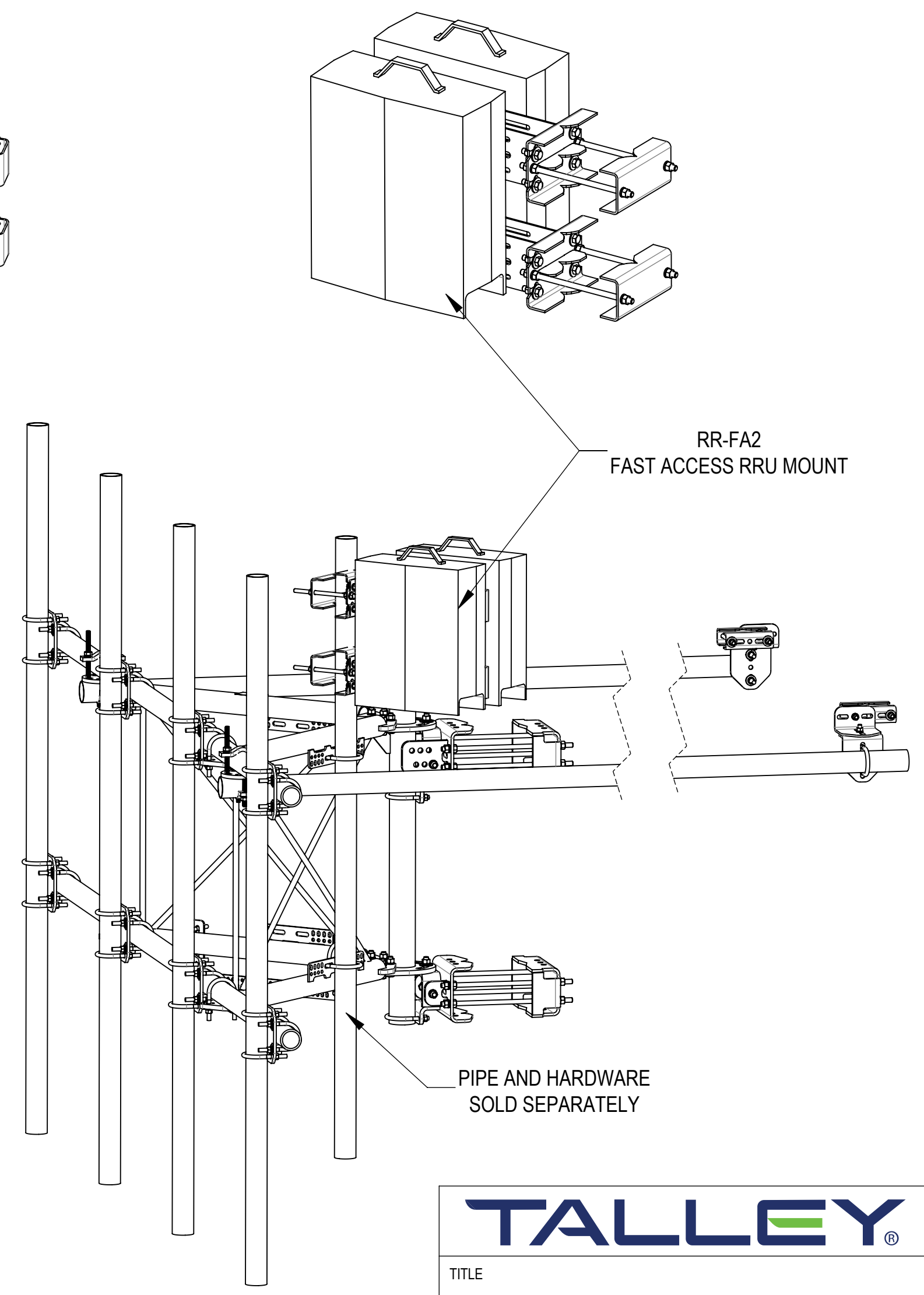
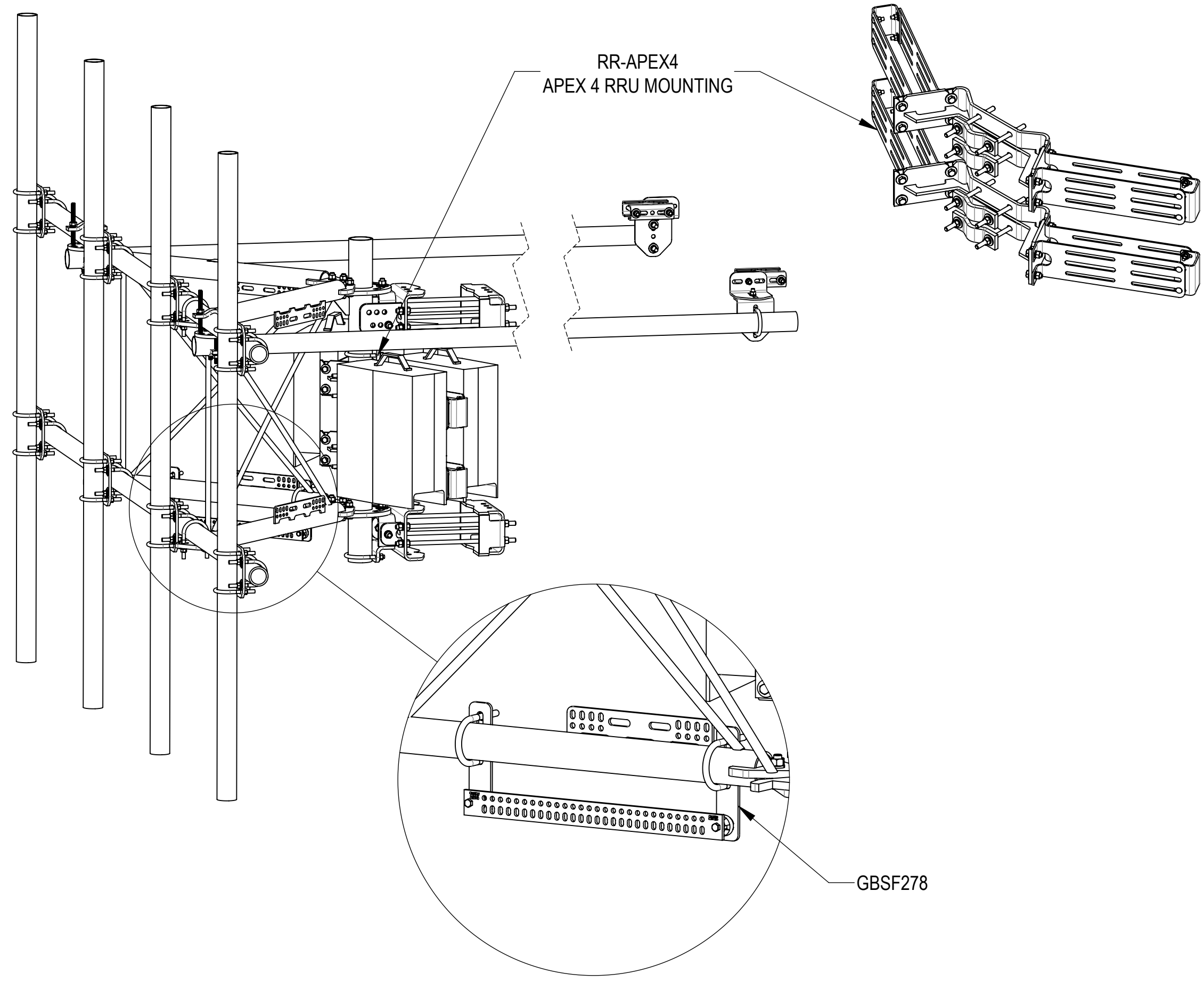
3

2

1

ACCESSORIES ORDERED SEPARATELY:

NOT ALL MATERIALS ARE INCLUDED WITH ITEMS SHOWN ON THIS PAGE
SEE RESPECTIVE PART NUMBER DRAWING BOM FOR DETAILS



TITLE
SECTOR FRAME, SFG23HDX SERIES

SIZE C	SCALE 1:12	DOCUMENT NO. SFG23HDX SERIES
------------------	----------------------	---------------------------------

	DRAWING			SHEET 12 OF 12
	VERSION 06	STATUS RE	REVISION J	

Confidential

4

3

2

1