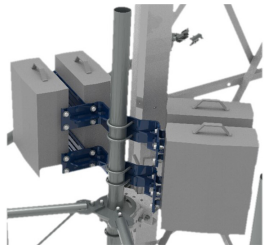


# RR-APEX4 | APEX RRU MOUNT



Apex RRU Mount for up to 4 Radios - Mounts to Extended Spine on G2RHDX & RHDXL Series Mounts

Designed for G2 RHDX Series Mounts with Extended Spine

- Increased versatility and stability
- More RRU mounting available, reducing need for additional mounts
- Better load management and Less structure stress
- Angled RRU brackets for stronger, more versatile mounting
- Decreased PIM from radio relocation (pulls radio from near field)
- Decreased antenna pipe loading
- Compatible with towers and monopoles
- Fits 2-3/8" to 4-1/2" OD Pipes

## Product Classification

<b>Portfolio</b>	CommScope®
<b>Product Type</b>	Remote radio head unit mount
<b>Ordering Note</b>	CommScope® standard product with terms
<b>Warranty</b>	One year

## General Specifications

<b>Mounting</b>	Pipe, 88.9 mm (3-1/2 in) OD
-----------------	-----------------------------

## Dimensions

<b>Height</b>	381 mm   15 in
<b>Length</b>	1,320.8 mm   52 in
<b>Compatible Diameter</b>	88.9 mm   3.5 in
<b>Mounting Diameter, maximum</b>	114.3 mm   4.5 in
<b>Mounting Diameter, minimum</b>	60.325 mm   2.375 in

## Material Specifications

<b>Material Type</b>	Hot dip galvanized steel
----------------------	--------------------------

## Mechanical Specifications

<b>Wind Rating</b>	For Specifications, please contact <a href="mailto:steelproducts@commscope.com">steelproducts@commscope.com</a> or call 800-255-1479
--------------------	--

# RR-APEX4 | APEX RRU MOUNT

---

## Packaging and Weights

<b>Included</b>	Clamps   Hardware
<b>Packaging quantity</b>	2
<b>Weight, net</b>	38.102 kg   84 lb

## Regulatory Compliance/Certifications

<b>Agency</b>	<b>Classification</b>
CHINA-ROHS	Below maximum concentration value
REACH-SVHC	Compliant as per SVHC revision on <a href="http://www.commscope.com/ProductCompliance">www.commscope.com/ProductCompliance</a>
ROHS	Compliant
UK-ROHS	Compliant



## \* Footnotes

<b>Warranty</b>	For more information, please consult our Product Warranty guidelines
<b>Wind Rating</b>	BWS—Base Wind Speed; FBC—Florida Building Code