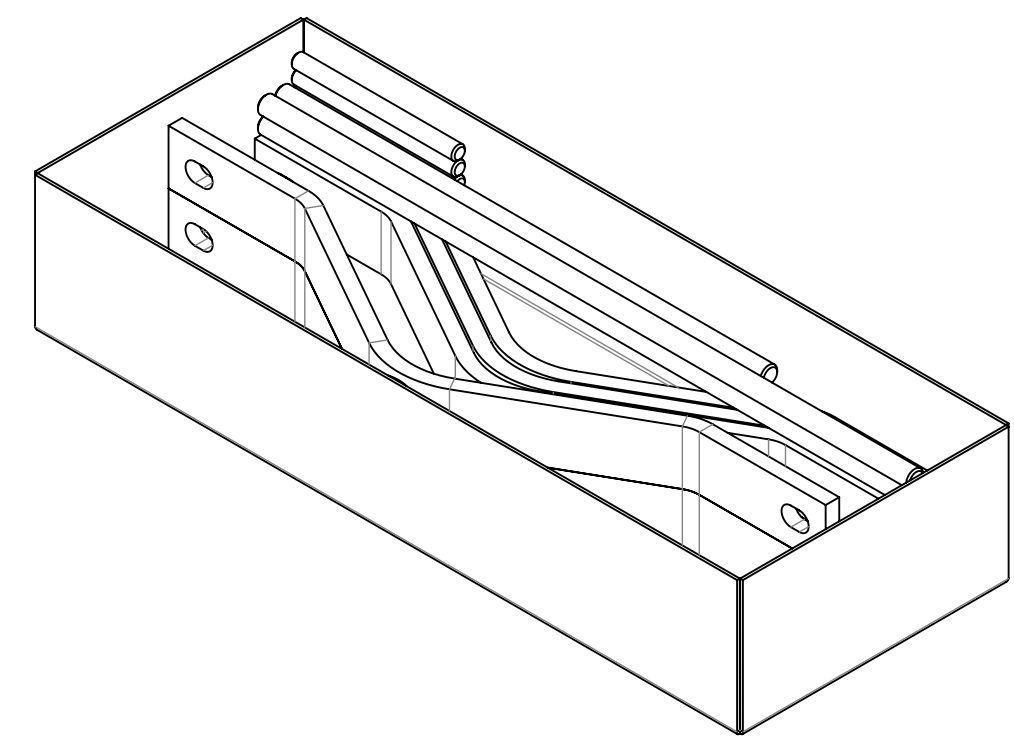
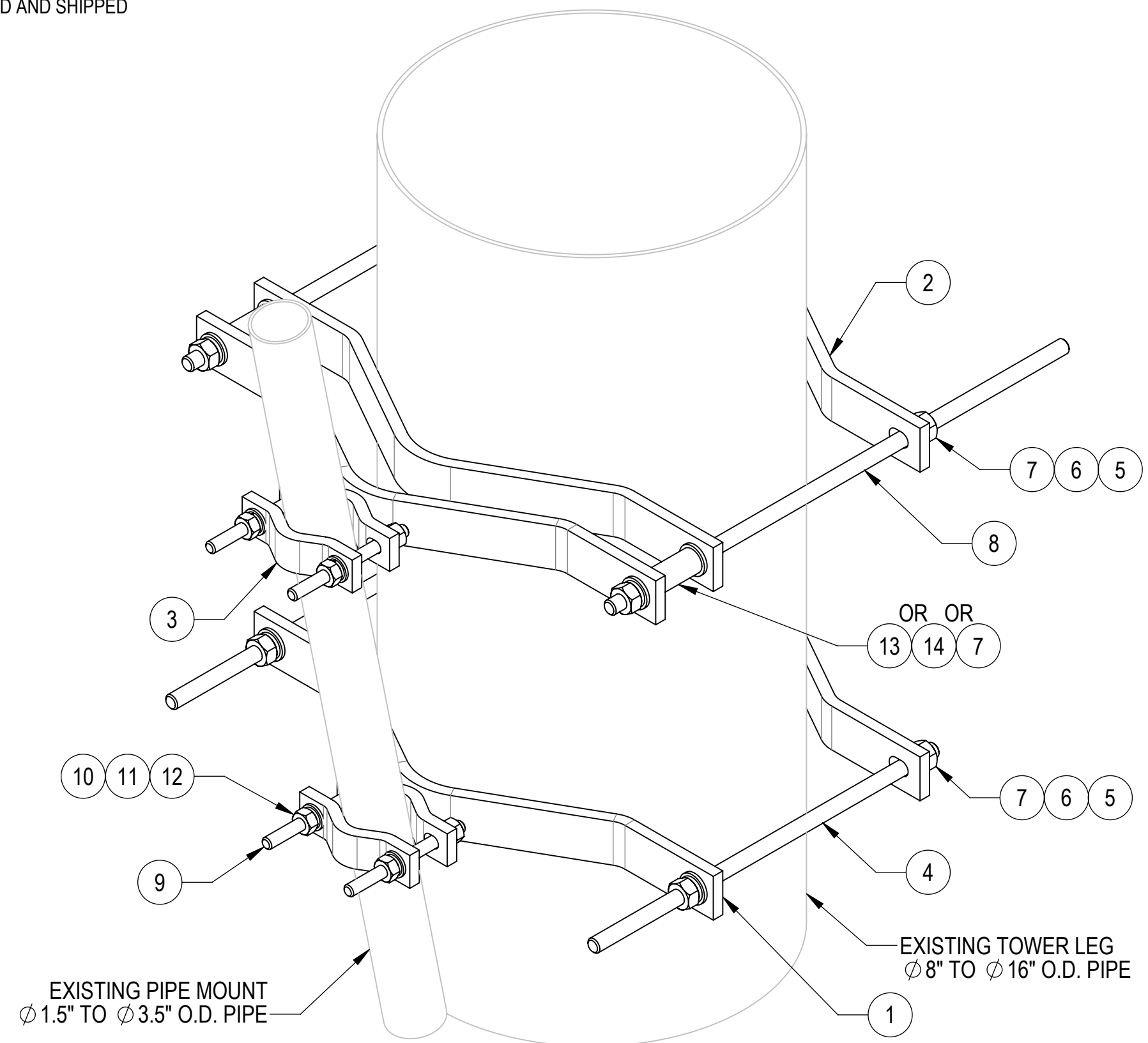


- 1.0 GENERAL NOTES
 1.1 ALL METRIC DIMENSIONS ARE IN BRACKETS [X.X]
 1.2 FOR PATENT INFO: <https://www.adwpat.com>
 2.0 DESIGN NOTES
 3.0 MANUFACTURING/SPECIAL REQUIREMENTS
 3.1 TIGHTEN ALL BOLTS SECURING FLAT PLATES BY THE TURN-OF-NUT METHOD. TIGHTEN ALL U-BOLTS USING TURN-OF-NUT METHOD WITH ATTENTION TO LEAVE EQUAL DISTANCE AND EQUAL FORCE ON EACH LEG OF THE U-BOLT.
 3.2 INCLUDED SLEEVES (ITEMS 13 & 14) & NUT (ITEM 7) TO BE INSERTED IF REQUIRED FOR TOWER TAPER.
 3.3 OFFSET SLEEVES MAY BE CUT FOR DIFFERENT TAPER.
 4.0 TEST
 5.0 PACKAGING
 5.1 PACKAGING SHALL MEET ANDREW REQUIREMENTS PER DOCUMENT IS-PL-3005
 5.2 PRINTED DOCUMENT TO BE PLACED INSIDE POLYBAG AND THEN IN SHIPPING CONTAINER
 5.3 EXTRA HARDWARE MAY BE SUPPLIED, BAGGED AND SHIPPED

REVISIONS			
REV.	DESCRIPTION	DATE	APPROVED
A	INITIAL RELEASE	JTS 04/06/01	
B	ADD PACKING; CHG BOM	CEB 05/10/2016	8000014053
C	REPLACED BOX	QDL 07/06/2017	8000024662
D	UPDATED DRAWING TO NEW FORMAT	RY1002 13OCT25	BA1025 50105335AMO



PACKAGE

**COMPONENT PART NUMBERS PROVIDED FOR ASSEMBLY PURPOSES;
 INDIVIDUAL COMPONENTS MAY BE SHIPPED AS PARTS WITHIN AN INCLUDED KIT.**

ITEM	PART NO.	DESCRIPTION	QTY.	WEIGHT	NOTE NO.
1	LSA	SMALL TO LARGE ADAPTER HALVE	2	8.36 LBS	
2	LCP10	LARGE CLAMP HALF	3	7.17 LBS	
3	SCP10	CLAMP HALF: 1/2", 9/16" HOLE, 4-1/8" (EA)	2	1.20 LBS	
4	MT-382-18	5/8" X 18" GALV THREADED ROD	2	1.55 LBS	
5	GWFO5A	GALV FLAT WASHER HARDENED 5/8", 1.30D	12	0.04 LBS	
6	GWL-05	5/8" GALV LOCK WASHER	12	0.03 LBS	
7	GN-05A	5/8" GALV HEX NUT (A194 2H)	12	0.12 LBS	
8	MT-382-24	5/8" X 24" GALV THREADED ROD	2	2.07 LBS	
9	MT-379-6	1/2" X 6" GALV THREADED ROD	4	0.33 LBS	
10	GWFO4A	1/2" GALV FLAT WASHER (A325)	8	0.02 LBS	
11	GWL-04	1/2" GALV LOCK WASHER	8	0.01 LBS	
12	GN-04A	1/2" GALV HEX NUT (A194 2H)	8	0.07 LBS	
13	OS234	3/4" X 2-1/4" OFFSET SLEEVE	2	0.22 LBS	
14	OS334	3/4" X 3-1/4" OFFSET SLEEVE	2	0.31 LBS	

DENSITY	53.23	lbs/in ³
MASS	188.82	lbs
VOLUME	1201.39	in ³
SURFACE AREA		in ²
HEIGHT	32"	
LENGTH	24"	
WIDTH		

Confidential

TOLERANCES		SAP MATERIAL MASTER	
0 PLACE X[X] ± 0.25[6.4]	2 PLACE .XX[X] ± 0.03[0.8]	LS-100-SSH	
1 PLACE .X[X] ± 0.06[1.5]	ANGLES ± 2°		
FINISH		MATERIAL	
<small>UNLESS OTHERWISE SPECIFIED DIMENSIONS ARE IN INCHES INTERPRET PER ANSI Y 14.5M-1994</small>		NAME	DATE
		CE ACG	02/17/06
		RW RY1002	10/14/2025
		AD YMENG	10/16/2025
TITLE		SCALE	
ADPTR, 1.5"-3.5" TO 8"-16" OD, TPD, PIPE-PIPE		1:4	
		DOCUMENT NO.	
ECN 50105335AMO		LS-100-SSH	
SIZE	Auth Group	INSL	MODEL
C			
VERSION	STATUS	REVISION	DRAWING
01	RE	D	01 RE D
			SHEET
			1 OF 1