

Electrical Specifications

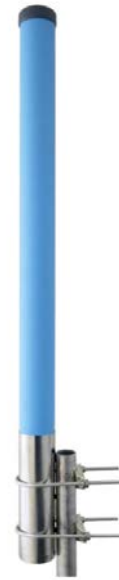
Frequency (Continuous)	144-174 MHz
Bandwidth	Full Band
Gain	2.5 dBi avg. (0 dBd)
Power Rating (Max.)	500 W
Impedance (Nom.)	50 Ω
Polarization	Vertical
VSWR (Max.)	1.5:1
E Plane	93°
H Plane	360°
RF Connector Type	N Female

Mechanical Specifications

Antenna Dimensions (HxWxD)	62.8" x 3.8" x 3.8"
Weight (Antenna+Mounts)	12.8 lbs.
Materials	Stainless steel and fiberglass
Mounting	2 - 3.5" mast diameter, heavy duty stainless steel mounting bracket

Environmental Specifications

Wind Loading	18.4 lb / 82 N @ 100 MPH 41 lb / 183 N @ 150 MPH 69 lb / 307 N @ 200 MPH
Wind Loading with 1/2" Ice	26 lb / 117 N @ 100 MPH 97 lb / 433 N @ 150 MPH 88 lbs / 307 N @ 200 MPH

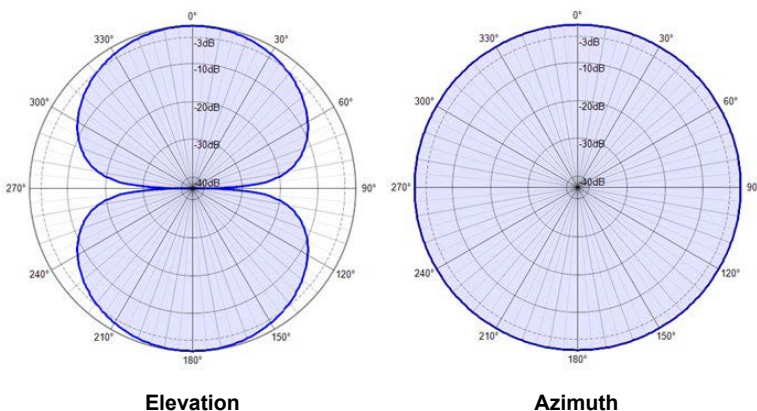


The EMR150FC2 is a vertical base station antenna covering the 144-174 MHz band. This antenna offers a stable radiation pattern across the entire band. The antenna is enclosed in a heavy-duty fiberglass radome and has a fixed N type female connector.

Product Features

- Ideal for Base Station applications
- Factory tuned, no further tuning required
- Fully enclosed in a heavy duty radome
- Weather and corrosion resistance
- DC Grounded

Radiation Pattern



VSWR

