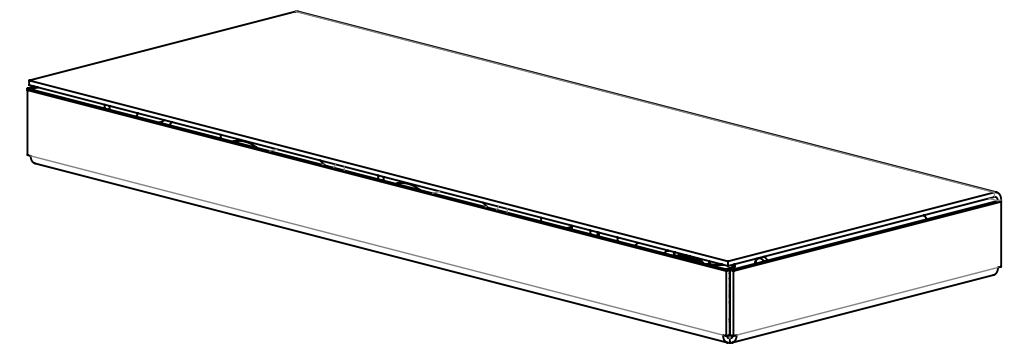
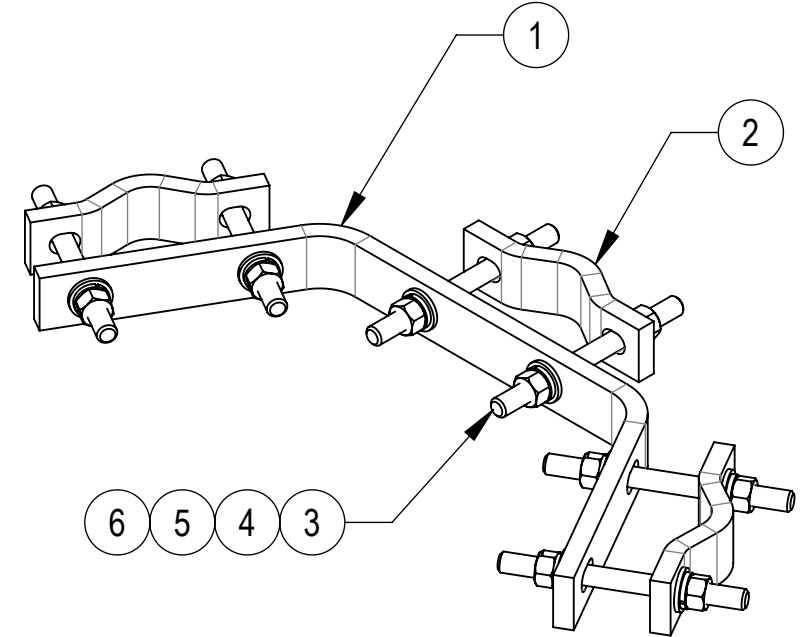
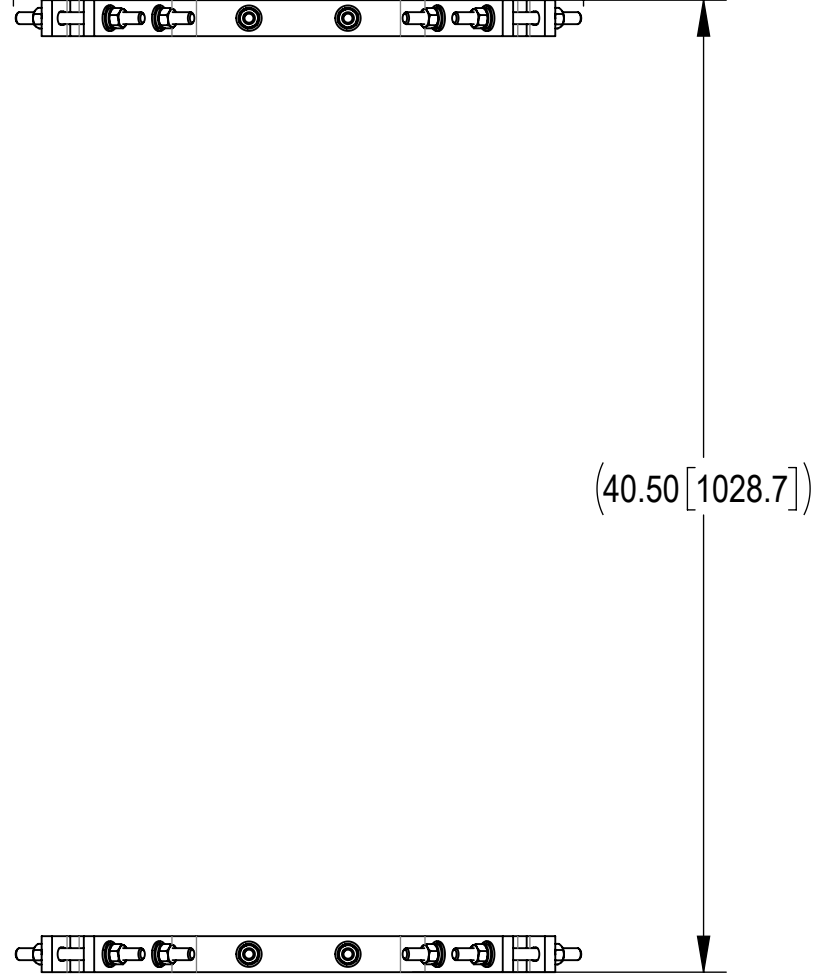
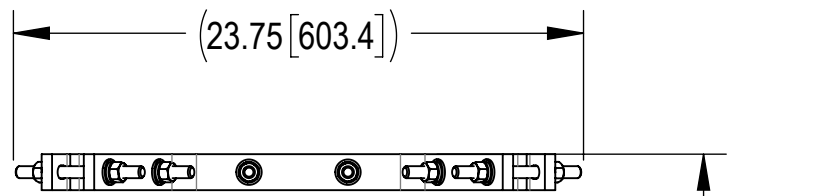
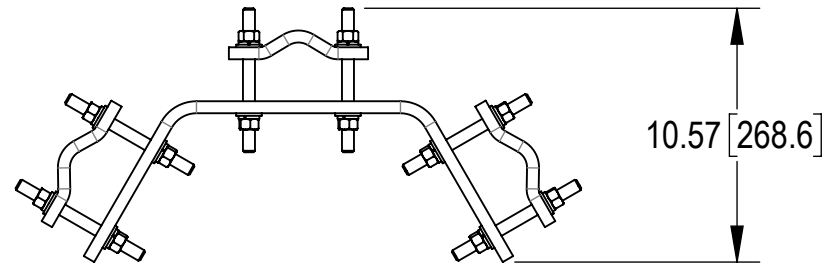


- 1.0 GENERAL NOTES
 1.1 ALL METRIC DIMENSIONS ARE IN BRACKETS [X.X]
 1.2 FOR PATENT INFO: <https://www.adwpat.com>
- 2.0 DESIGN NOTES
 2.1 ANY HAZARDS OR OBSTRUCTIONS TO THE CLIMBING FACILITY AND SAFETY CLIMB MUST BE IDENTIFIED PRIOR TO INSTALLING THE APPURTENANCE. ADDITIONAL PRODUCTS MAY BE REQUIRED TO MAINTAIN THE INTEGRITY OF THE SAFETY CLIMB. DURING INSTALLATION, TEMPORARY AND/OR PERMANENT PRECAUTIONARY MEASURES SHOULD BE TAKEN TO PRESERVE THE CLIMBING FACILITY AND/OR SAFETY CLIMB.
- 3.0 MANUFACTURING/SPECIAL REQUIREMENTS
 3.1 TIGHTEN ALL BOLTS SECURING FLAT PLATES BY THE TURN-OF-NUT METHOD. TIGHTEN ALL U-BOLTS USING TURN-OF-NUT METHOD WITH ATTENTION TO LEAVE EQUAL DISTANCE AND EQUAL FORCE ON EACH LEG OF THE U-BOLT.
- 4.0 TEST
- 5.0 PACKAGING
 5.1 PACKAGING SHALL MEET ANDREW REQUIREMENTS PER DOCUMENT IS-PL-3005
 5.2 PRINTED DOCUMENT TO BE PLACED INSIDE POLYBAG AND THEN IN SHIPPING CONTAINER
 5.3 EXTRA HARDWARE MAY BE SUPPLIED, BAGGED AND SHIPPED

REVISIONS			
REV.	DESCRIPTION	DATE	APPROVED
A	INITIAL RELEASE	MLL 12JAN00	TP
B	REVISED AND REDRAWN	LAP 01APR01	TP
C	PRODUCT REDESIGN	AW 05DEC06	TP
D	CHANGED HARDWARE	AW 11DEC06	TP
E	DELETED U-BOLTS ADD SPC10	MSM 18NOV09	TP
F	ADDED ORTHOGONAL VIEWS	RDLS 21JUN18	TP 8000030431
G	UPDATED DRAWING TO NEW FORMAT; MATERIAL GWF04A WAS GWF-04 PER SAP BOM	YC1059 22MAY25	YW1047 50102992AMO



PACKAGE

www.Talleycom.com | Sales@Talleycom.com | 800.949.7079



TOLERANCES		SAP MATERIAL MASTER	
1 PLACE .X[X] ± 0.12[3.0]	3 PLACE .XXX[X] ± 0.03[0.8]	DA-C200	
2 PLACE .XX[X] ± 0.06[1.5]	ANGLES ± 2°		

FINISH	MATERIAL
--------	----------

UNLESS OTHERWISE SPECIFIED DIMENSIONS ARE IN INCHES INTERPRET PER ANSI Y 14.5M-1994	NAME	DATE	TITLE
	CE AW	12/05/06	DOUBLE ANTENNA MOUNT (KIT/2)
	RW YC1059	05/26/2025	
	AD YW1047	05/27/2025	SCALE
	RE YMENG	05/27/2025	DOCUMENT NO.
ECN 50102992AMO		1:8	DA-C200

DENSITY		lbs/in ³
MASS	22.48	lbs
VOLUME	79.79	in ³
SURFACE AREA	612.20	in ²
HEIGHT	3.0"	
LENGTH	23.8"	
WIDTH	10.6"	

Confidential

COMPONENT PART NUMBERS PROVIDED FOR ASSEMBLY PURPOSES; INDIVIDUAL COMPONENTS MAY BE SHIPPED AS PARTS WITHIN AN INCLUDED KIT.

ITEM	PART NO.	DESCRIPTION	QTY.	WEIGHT	NOTE NO.
1	DAC2	DOUBLE ANTENNA CLAMP	2	4.75 LBS	
2	SCP10	CLAMP HALF: 1/2", 9/16" HOLE, 4-1/8" (EA)	6	1.20 LBS	
3	MT-379-6	1/2" X 6" GALV THREADED ROD	12	0.33 LBS	
4	GWFO4A	1/2" GALV FLAT WASHER (A325)	24	0.02 LBS	
5	GWL-04	1/2" GALV LOCK WASHER	24	0.01 LBS	
6	GN-04	1/2" GALV HEX NUT	24	0.04 LBS	

SIZE	Auth Group	INSL	MODEL	DRAWING			SHEET		
C			VERSION	STATUS	REVISION	VERSION	STATUS	REVISION	1 OF 1
			00	RE	A	01	RE	G	