



## Mounts for Omnidirectional Antennas

### STANDARD CONFIGURATION

Model	Description	Application	Qty per Assembly
MMK4	Heavy-duty fiberglass base station mount	For mounting an antenna with 2-1/2" maximum diameter onto a 2-1/2" maximum outer diameter mast.	2
MMK8A	Aluminum MFB mount bracket	For mounting a 1-1/4" diameter antenna to a 2-1/2" maximum diameter mast.	1
MMK9	Aluminum MFB mount bracket	For mounting a 1-5/16" diameter antenna to a 2-1/2" maximum diameter mast.	1
MMK12	Heavy-duty sand cast mount bracket	For mounting a 1.0-1.5" diameter antenna to a 1.5-3.0" diameter mast.	1
BAM1005	Light duty parallel or perpendicular pipe to pipe clamp	Mounts to legs, towers, accessories with 1.5 - 2.4" OD pipe.	1
BAM1009	Aluminum L-bracket for mounting to parallel or perpendicular pipe or mast	Mounts to legs, towers, accessories with 1.5-2.4" OD pipe. Has 0.625" diameter hole for mounting connectors or stud mounts.	1
BAM1011-HCA	Black aluminum L-bracket for mounting to parallel or perpendicular pipe or mast	Mounts to legs, towers, accessories with 1.5-2.4" OD pipe. Has 0.625" diameter hole for mounting connectors or stud mounts.	1
BAM1017	Heavy-duty universal pole mounting bracket	Universal mount, typically used for mounting an antenna with 2.3-2.5" OD to a utility pole (pole hardware not included).	1



BAM1017



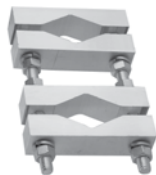
BAM1005



BAM1009



BAM1011-HCA



MMK4



MMK8A



MMK9



MMK12

## Mounts for Directional Antennas



### STANDARD CONFIGURATION

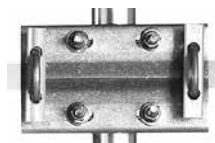
Model	Description	Application	Qty per Assembly
MBSWM	Wall mount	For wall mounting antennas of up to 2-1/4" in diameter.	1
MPAB14	Heavy-duty outdoor cast aluminum adjustable hose clamp	Adjustable outdoor hose clamp for XF series panel antennas for mounting up to 1.6" maximum diameter	1
MYK3	Heavy-duty mount for 7/8" boom yagis	For mounting 7/8" diameter boom yagis to a 2" maximum diameter mast.	1
MYK10	Heavy-duty cast yagi bracket	For mounting a 7/8" OD yagi to a 2-1/2" maximum OD mast. Adjustable for vertical or horizontal polarization.	1
BWC1001	Yagi clamp	Fits mast OD of 0.5 - 0.84". Mounts to legs, towers, accessories with 1.25 - 2.4" OD	1
BWC1001A	Yagi clamp	Fits mast OD of 0.75 - 1". Mounts to legs, towers, accessories with 1.25 - 2.4" OD	1



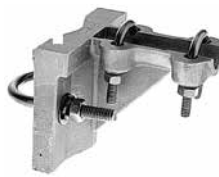
MBSWM



MPAB14



MYK3



MYK10



BWC1001A